

## **Children with Cancer UK**

Trustees' Report and Financial Statements  
For the year ended 31 December 2017

Registered Charity Number: 298405  
Inaugurated by Diana, Princess of Wales  
Company limited by guarantee, Number: 4960054



## Children with Cancer UK in numbers

<b>£14.3M</b>	raised to create a world where no child dies from cancer
<b>£3.74M</b>	invested in a Precision Medicine initiative
<b>1</b>	International Science Conference
<b>2</b>	new patient and family homes built
<b>1,510</b>	welfare grants funded
<b>1,000</b>	assistive technology funded for over 1,000 children in hospices
<b>13</b>	new research awards, totalling £5.8million
<b>1,400</b>	runners in the Virgin London Marathon
<b>600</b>	cyclists in Prudential Ride London

Olivia, pictured on the front cover, ringing the End of Treatment Bell at Birmingham Children's Hospital

# **CHILDREN WITH CANCER UK**

## **TRUSTEES' ANNUAL REPORT AND CONSOLIDATED FINANCIAL STATEMENTS**

### **FOR THE YEAR ENDED 31 DECEMBER 2017**

## **TRUSTEES' ANNUAL REPORT**

<b>MESSAGE FROM THE CHAIR OF CHILDREN WITH CANCER UK</b>	<b>4</b>
<b>STRATEGIC REPORT</b>	<b>5-6</b>
<b>APPROACH AND AIMS</b>	<b>5-6</b>
<b>VISION</b>	<b>5-6</b>
<b>OUTCOMES IN 2017</b>	<b>7-16</b>
<b>HOW YOU GAVE SUPPORT</b>	<b>17-20</b>
<b>FUNDRAISING</b>	<b>21- 22</b>
<b>THANK YOU</b>	<b>22</b>
<b>LOOKING AHEAD: STRATEGIC PLAN 2018-2020</b>	<b>23-24</b>
<b>FINANCIAL REVIEW</b>	<b>25-33</b>
<b>REFERENCE AND ADMINISTRATION</b>	<b>34-36</b>
<b>STATEMENT OF TRUSTEES' RESPONSIBILITIES</b>	<b>37</b>
<b>INDEPENDENT AUDITORS REPORT</b>	<b>38-41</b>
<b>CONSOLIDATED FINANCIAL STATEMENTS</b>	<b>42-44</b>
<b>NOTES TO THE FINANCIAL STATEMENTS</b>	<b>45-61</b>

## **MESSAGE FROM THE CHAIR OF CHILDREN WITH CANCER UK**

A very warm thank you to every one of you for your kind support and for enabling us to invest our largest ever amount into paediatric and young person cancer research - your generous donations help to save the lives of children with cancer and keep families together.

This year, your funding has allowed us to make our largest ever single grant. I'm pleased to say we have been able to invest £3.74 million towards making Precision Medicine a reality for young cancer patients. Precision Medicine is a potentially ground-breaking method of treatment for children and young people with cancer, making the most of the latest genomic technologies to allow treatment to target the DNA of the tumour. This exciting new development means doctors can provide safer and kinder treatments for children and young people with cancer.

We were pleased to get the support of so many MPs when we launched our Precision Medicine Initiative at an event at the House of Commons in March 2017. A key part of this project is to build an infrastructure that shows how Precision Medicine can work in the UK health system, ultimately paving the way for all young cancer patients in the UK to have Precision Medicine as a key part of their treatment options.

Enabling young cancer patients to grow up without a lifetime of health problems is essential to our work moving forward. It is heart-breaking that many of our young cancer survivors can then go on to have a life-time of health issues as a result of their long, gruelling and toxic treatment. Precision Medicine has the potential to revolutionise treatment for young cancer patients in the UK and we are delighted to be at the forefront of making this happen.

Supporting children with cancer so they can be with their families longer is another key foundation of our work. We were pleased to contribute to the development of two new patient family accommodation homes in 2017 – one in Bristol and the other in Southampton. We look forward to the doors opening, helping to keep families together throughout the long and difficult experience of cancer treatment.

We undertook a strategic review this year, with the ultimate aim of funding even more research and welfare work in the future. It is essential we fund even more research moving forward – tragically cancer still causes the most deaths for children aged 0-14 years old in the UK and there are now 35,000 cancer survivors who may have long term health problems associated with their treatment.

2018 is a big year for us, as we celebrate 30 years of saving young lives. We have achieved a lot since 1988 and we will be demonstrating the effect of our work through an Impact Report due to be launched in the autumn. We look forward to continuing to fund even more vital specialist research that will take us closer to our vision of a world where no child dies from cancer.

Thank you for all your support in 2017. With your continued help, I look forward to all we can achieve as we continue to fight the injustice of cancer in children.

**Eddie O’Gorman OBE, Founder and Chair of Trustees**

## **STRATEGIC REPORT**

The Trustees of Children with Cancer UK present their Annual Report for the year ended 31 December 2017 under the charities Act 2011 and the Companies Act 2006, including the Directors' Report and the Strategic Report under the 2006 Act, together with the audited financial statements for the year

### **APPROACH AND AIMS**

Children with Cancer UK is the leading national children's charity dedicated to the fight against childhood cancer. Almost 4,500 children and young people are diagnosed with cancer every year in the UK. Our aims are to determine the causes, find cures and provide care for children with cancer. Our small team is united by a common goal – to save and improve young lives.

### **VISION**

Our vision is a world where no child dies of cancer.

### **MISSION**

Our mission is to improve survival rates and the quality of survival in young cancer patients and to find ways to prevent cancer in the future.

### **OUR BRAND PROMISE**

We actively raise and invest money for vital specialist research to help save the life of every child with cancer and keep their family together.

## STRATEGIC GOALS

**OUR VISION: A world where no child dies of cancer**

### STRATEGIC GOALS:

- 1) To become, and continue to hold position, as the UK's largest not-for-profit financial contributor to paediatric and young person cancer research
- 2) To grow net income available for investment in Charitable Activities to £15M per annum by 2020

**OUR MISSION: To improve survival rates and the quality of survival in young cancer patients and to find ways to prevent cancer in the future**

### CORE VALUES & GUIDING PRINCIPLES:

**Our Strategic Imperatives**  
(slide below)

### OUR BRAND PROMISE:

We actively raise and invest money for vital specialist research to help save the life of every child and young person with cancer and keep their family together

### STRATEGIC PILLARS (funding focus) and SUPPORTING GOALS

**AWARENESS  
AND  
EDUCATION**

**IMMUNO-  
THERAPY**

**PRECISION  
MEDICINE**

**RESPITE  
HOMES**

**PREVENTION**

## **OUTCOMES IN 2017**

### **RESEARCH**

**We invest in high quality research that really matters and would otherwise go unfunded.**

In 2017 we invested our largest ever amount into vital specialist research:

- 1 Precision Medicine Initiative - £3.74M – to a single project
- 11 new research projects
- 1 International Science Conference

### **WELFARE**

**We support children with cancer so they can be with their families for longer.**

- We helped to build 2 new patient and family accommodation homes.
- We provided funding for 1,510 exceptional grants, amounting to £332,000 – to help families financially when they needed it the most through our partner, CLIC Sargent.
- We funded assistive technology for over 1,000 children and young people with cancer in hospices around the UK through our partner, Lifelites.

### **AWARENESS**

**We unleash hope as a force for good.**

- 1 Precision Medicine Initiative launch at the Houses of Parliament
- 1 new website launched
- 456,856 website sessions
- 14% increase in brand awareness survey (41% average for 2017 compared to 36% in 2016)
- 630 newspaper articles

### **FUNDRAISING**

**We inspire people to contribute to a better future for our children.**

- 1,400 runners pounded the streets of London running the Virgin Money London Marathon
- 600 cyclists pedalled round the streets of London and Surrey in Prudential RideLondon
- 7,000 regular Linda's Lottery players with 10,000 entries
- £620,000 raised at the Children with Cancer UK Ball – our largest ever amount
- £135,000 raised at Opera at Syon



## TAILORED TREATMENT FOR CHILDHOOD LEUKAEMIA

In 2017 Children with Cancer UK jointly funded research that was published in the journal of Clinical Oncology, the research by scientists at Newcastle University and doctors at Great Ormond Street Hospital and the Bristol Royal Hospital for Children

The researchers looked at the national clinical trial (UKALL2003), using the minimal residual disease (MRD) test – which was separately funded by Children with Cancer UK. The results of the research showed that treatment could be reduced if the levels of Leukaemia cells drop below a certain level after induction chemotherapy. This would limit side effects, whilst not affecting a child's chances of a cure. MRD testing has since been adopted as a standard of care in the NHS for children with Acute Lymphoblastic Leukaemia.

Vega, one of our patient stories, was on the UKALL2003 trial. Vega's mum, Kathi says *"Vega has now been off treatment for three and a half years and it is six years since she was first diagnosed with Leukaemia. She is really well. We are very lucky as Vega has very little lingering effects from the treatment – her legs get tired easy, but she attended a summer dance school and could easily keep up with all the other children."*

## RESEARCH

**Every day the parents of twelve children and young people in the UK are told that their child has cancer. Our vital, specialist research gives children and young people the best chance of survival.**

We fund high quality research aimed at developing treatments which are not only more effective but less debilitating and disruptive to young lives.

We are currently funding almost 70 active research projects, worth over £22M at centres of excellence around the UK.

In 2017, we made 11 new research awards, totalling over £5.8M. These ranged from large project grant funding, capacity building through our Fellowships and Studentships and supporting specialist childhood cancer meetings.

All the research we fund is rigorously scrutinised by our Scientific Advisory Panel and reinforced by an expert peer review. This ensures that we only support the highest quality research that will have the greatest impact in terms of patient care.

Information on all the projects we fund is available on our website; here we have selected some highlights of our work in 2017.

## **We liberate visionary researchers and accelerate breakthroughs.**

### **IMPACT Precision Medicine – Professor Louis Chesler, Institute of Cancer Research, London**

Children with Cancer UK has recently funded the work (£3.74M over 3 years) of Professor Louis Chesler at the Institute of Cancer Research. Professor Chesler and his team are carrying out a proof of concept project for a potentially game-changing approach to treating children's cancers, known as Precision Medicine.

Precision Medicine relies on a detailed genetic analysis of an individual patient's tumour(s), to prescribe a course of treatment that is tailored to their specific genetic profile. This differs significantly from the current approach, which makes quite uniform recommendations for treatment, based on broad tumour categories. In the new approach, treatment can target key genetic mutations at the heart of a cancer, increasing its effectiveness and decreasing the damage done to surrounding healthy cells.

This is an approach currently used to great effect in Germany and the USA, but which the UK is sadly behind on implementing for our children. Professor Chesler and his team aim to prove that Precision Medicine can work in the UK health system, encouraging take up by the NHS through a project known as Individualising Management of Paediatric Cancer Treatment (IMPACT). As such, this has the potential to support a revolution in care for children with cancer.

Working with a team of researchers, technicians and paediatric oncologists, Professor Chesler is building a small-scale, replicable model of Precision Medicine, actively working with child patients. The successful adoption of this approach across the UK could be the breakthrough needed to revolutionise childhood cancer care, improving survival rates and drastically reducing the 'collateral damage' to healthy cells as part of treatment. Some of the vital work Professor Chesler's team will carry out includes:

- A structure for the genetic analysis of patient tissue which will allow for highly accurate diagnosis and treatment recommendations.
- The development of a tissue bank, which will build a large source of patient samples – this is extremely valuable in childhood cancers because of their rarity
- Establishing a hub where patient samples are analysed using a next-generation sequencing tool which provides a highly-defined genetic picture of individual tumours
- A new bioinformatics team, which will interpret the genetic data to help decide on the best treatment and to aid discovery of new genetic signals and mutations that could be targeted
- A national database which will allow the bioinformatics team to track the many different tumour types and how they respond to treatment, which will be a powerful aid to future treatments and prognosis
- The development of a panel of oncology experts (known as the National Molecular Tumour Board) who will discuss the findings of the genetic analysis and bioinformatics teams, before making informed recommendations for patient treatment. This will include assigning patients to clinical trials for new targeted drugs and therapies.

The initiative will significantly help move the latest and best medical science into clinical practice. Over time, with feedback from clinical trials and using expert databases, clinicians will be able to personalise treatment plans to maximise potential for cure and minimise adverse long-term toxic side-effects from the treatments.

**We invest in high quality research that really matters which would otherwise go unfunded.**

**Establishing new ways of treating childhood Leukaemia by targeting cholesterol and fatty acid dependence- Dr Owen Williams – UCL Great Ormond Street Institute of Child Health, London**

Dr Williams' team is based at UCL Great Ormond Street Institute of Child Health and is working with the Northern Institute for Cancer Research, Newcastle University. They are working on new ways of treating Leukaemia – the most common of childhood cancers.

Modern medicine has made enormous advances in treating children suffering from Leukaemia. Nevertheless, this disease still makes up a third of all children who do not survive cancer. Research in Dr Williams' and his collaborators' laboratories, is based upon finding new treatments for types of Leukaemia that are difficult to treat, through understanding the disease at the molecular level. Cancer cells often rely heavily on certain normal cellular signaling pathways, which they effectively 'hijack'. In common with other cancers, Leukaemia cells depend on high levels of cellular cholesterol and fatty acids for growth and survival. The team has discovered a novel cellular signaling pathway regulated by a molecule known as SMAD7 in Leukaemia cells that ensures cholesterol and fatty acid synthesis. Blocking this pathway leads to elimination of Leukaemia, suggesting that this approach may be used in combination with other drugs to enhance Leukaemia therapies.

The aim of this research project is to examine whether blocking SMAD7 function can enhance elimination of Leukaemia cells by drugs that inhibit cholesterol and fatty acid synthesis and conventional chemotherapy drugs. Dr Williams' team will examine how effective the combinations of drugs that they identify are at treating Leukaemia in pre-clinical models, which they have been developing over the last two years. By further investigating how SMAD7 regulates cholesterol and fatty acid production in Leukaemia cells, they also plan to examine existing clinical drugs, currently used for other diseases, that are also able to block SMAD7 function. These existing drugs will then be tested in our pre-clinical Leukaemia models.

This project will establish whether targeting SMAD7 can enhance the therapy of childhood Leukaemia and identify drugs that are effective at doing this. This project opens up the possibility of using existing drugs that target cholesterol in novel Leukaemia therapy, as well as identifying clinically relevant drugs that may have unanticipated anti-Leukaemia activities. This will improve the treatment options for children with Leukaemia who are currently in need of new therapies, reducing the amount of chemotherapy they are given and making their treatment in general more effective.

## **We share learning for the greater good of all.**

### **Risk stratification of the national population of survivors of childhood, teenage and young adult cancer – Professor Mike Hawkins, University of Birmingham**

Professor Hawkins is working on identifying those survivors of childhood, teenage and young adult cancer with the most 'side-effects' of treatment. By studying the entire national population of survivors of childhood cancer and of teenage and young adult cancer, the team will determine those at low, medium and high risk of 'side-effects' of treatment. Such information is important for survivors and those caring for survivors by identifying those most at risk.

We know that survivors of childhood cancer experience severe premature mortality in that by 50 years from diagnosis 30% have died when only 6% would be expected to have died from the general population. The same pattern also affects survivors of teenage and young adult cancer. However we do not currently know the total number of survivors of each of these cancer groups who live with side-effects in the UK.

Professor Hawkins' team have the details of all 35,000 survivors of childhood cancer diagnosed between 1940 and 2006 in Britain, together with the details of all 200,000 survivors of teenage and young adult cancer diagnosed between 1971 and 2006 in England and Wales. Using computers they will work out those that have since passed away, those that developed further cancers and those that were hospitalised and the reason for the hospitalisation. This will enable them to estimate the total risk of side-effects. We shall explore to see whether this risk varies by type of cancer diagnosed, types of cancer treatment received and several other factors.

This will allow us to identify subgroups of survivors at high, medium and low risk of side-effects of treatment. Such evidence will empower the survivors through knowledge of their long-term risks. The evidence will also help doctors and nurses concentrate their effort on those most at risk. It will also help plan future treatments with a view to minimising risks among future survivors.

### **Other science highlights:**

Alasdair Philips, Trustee, writes:

*"I have been involved with helping organise Children with Cancer UK's international scientific conferences since 2004. In 2017 we held our first scientific and medical conference outside of London. We went to another centre of medical research excellence that we have played a significant part in funding at Newcastle upon Tyne. It was wonderfully encouraging to have so many young researchers attend and present their new research results. We also had many first-class platform presentations on the current state of the art of translational medicine in paediatric cancer treatment – these are now available as videos on the conference website.*

*We had 130 people register for the conference, including the highest number of young researchers that we have ever had attending any of our meetings. 56 of them presented scientific Poster Presentations detailing the work they are doing and explaining why it is important. It was very difficult to judge the “best” as the standard was so high, but in the end Dr Ras Ramli PhD was awarded the prize for the best Poster on her work on a new Malignant Rhabdoid Tumour cancer therapy, and Dr Deepali Pal MBBS, PhD for the best short oral presentation of her research into screening of new drugs for child Leukaemia treatment. These awards highlight why the truly international input into the research being carried out at Newcastle is so important.*

*We also agreed to continue funding the World Health Organisation’s International Agency for Research on Cancer ‘Childhood Leukaemia International Consortium Data Coordinating Centre’ that we helped establish in 2013. This is collecting research results on environmental and other causes of childhood cancer, from studies around the world. This is really starting to make progress into finding some causes of childhood cancer (not just Leukaemia) so that we can start to do something to reduce the number of children who develop cancer.”*

## **2018 SCIENTIFIC PLANS**

In 2018 we will complete the assessment of the applications submitted under our 2017/18 Projects Grants round and continue accepting research proposals through our standard funding opportunities; Research Fellowships, Clinical Studentships, Project Grants 2018/19 and Conference & Meeting Grants.

Part of the charity’s mission is to help find ways of preventing children developing cancer in the future. In recent years we have mainly funded research into better, more effective and less toxic treatments, culminating in 2017 in our largest grant ever to help fund our Precision Medicine Initiative. In 2018 we intend to focus more on funding investigations into the causes of cancer and identifying preventable risks.

We take as our theme for our September 2018 conference the USA National Institutes of Health Precision Medicine definition as “an emerging approach for disease treatment and prevention that takes into account individual variability in genes, environment and lifestyle”, entitled “Precision Medicine – the Future – a landmark conference examining the way we understand cancer” we plan to announce a significant grant round for research into causes and prevention.

## **WELFARE**

**Our welfare activity will be in supporting residential homes and associated financial support for families affected by childhood cancer (Children with Cancer UK strategic pillar)**

Our welfare funding helps to create environments where parents can concentrate all their love and energy on their children during the long, unknown days of childhood cancer treatment. In 2017 our welfare work focused on creating patient and family accommodation, financial support and assistive technology for those children with cancer most in need.

## **PATIENT AND FAMILY ACCOMODATION**

We are very pleased to have invested in new patient family accommodation homes through our partnerships with CLIC Sargent and Bristol Royal Hospital for Children. Treatment for childhood and young person cancer can involve months of grueling treatment with extended hospital stays a large distance from the family home. The warm, friendly accommodation we help to fund provides children and families a sanctuary to stay in away from the hospital ward, enabling families to spend vital, precious time together. The new homes will serve hospitals in Bristol and Southampton and offer free accommodation to young cancer patients and their families.

## **FINANCIAL SUPPORT**

In 2017, 1,510 families were able to receive financial grants through the CLIC Sargent exceptional grants programme, helped by our funding. Since 2009 we have helped to provide funds for the CLIC Sargent grants programme to help provide families with vital financial support whilst their child is undergoing cancer treatment. Families with a child with cancer will spend on average an extra £600 a month on additional expenses during treatment. These grants give families one less thing to worry about, so they can concentrate on their child and family during treatment.

## **ASSITIVE TECHNOLOGY**

We were pleased to help support 1,000 young cancer patients with assistive technology in hospices around the UK through our grant to Lifelites. Cancer and the toxic treatment given to young patients can cause many life-limiting and complex disabilities. Our grant enables Lifelites to give free assistive technology to young cancer patients in hospices, enabling many to be able to express their feelings, communicate, play games, paint pictures and do school work. This technology allows children to be children again, when their world has completely changed.

## **ZIPPOS**

In September we welcomed nearly 50 families to be our VIP guests at a very special performance of Zippos Circus for children with cancer. Ringmaster, Norman Barret MBE, hosted the action-packed two hours of high-energy acts from across the world. The amazing line-up included the incredible motorcycle Globe of Terror, Juma the Contortionist, the stunning Cossack horses of the Khadikov Troupe, tumbling and human pyramids from the Kenya Boys, Hula Hoop performer, Odkia Amraaand and Norman Barrett's world famous budgies. After the show, the children enjoyed a delicious lunch and met some of the wonderful circus performers.

## **AWARENESS AND EDUCATION**

### **Precision Medicine launch at Parliament**

In March we were very proud to launch our Precision Medicine Initiative at the House of Commons. MPs, scientists, celebrities and families affected by childhood cancer, joined us to celebrate. We were also delighted to receive national media coverage from Sky News and The Sunday Telegraph highlighting the potential difference Precision Medicine could make to young cancer patients. Precision Medicine will bring safer, kinder treatments to young cancer patients and also give us a greater insight into why children develop cancer.

### **Our new website**

In May we were delighted to launch our brand new website. Our new website benefits from being built for mobile; the new website is not just easier to use and navigate, but is easier to expand and build upon in the future. The new site allows us to gain greater insights into how people are interacting with it and so allows us to continue to improve and develop it further in the future. Central to the website redevelopment has been making it easier for supporters to get involved with Children with Cancer UK. We are delighted that conversions to the new site have increased since the new site went live.

### **Childhood Cancer Awareness Month – Unleashing hope as a force for good**

During September we once again took part in Childhood Cancer Awareness Month where the world unites to raise awareness of cancer in children and young people. To mark Childhood Cancer Awareness Month we launched our hope-driven 'Golden Moments' campaign. Our campaign focused on the positive experiences families can have during their childhood cancer journey and sought to give hope to families currently undergoing treatment. Families sent in their own 'Golden Moments' from their child's cancer journey and a special 'Golden Moments' wall was created on our website.

Engagement with the campaign on social media was very high, as supporters new and old were inspired by family stories. To further maximise awareness of Childhood Cancer Awareness Month on social media we had a specially made Childhood Cancer Awareness Month social media frame for supporters to use. Over 4,000 people downloaded the golden themed frame and used it to spread the message of hope during September. One of our supporters also shared a very moving visual podcast detailing her daughter's battle with cancer.

### **What we will be doing in 2018**

In 2018 we shall be celebrating our 30<sup>th</sup> anniversary and trying to reach even more people, telling them about our vital, life-saving work. We will be undertaking a strategic review of our brand to ensure we are communicating to our supporters and the wider public in a consistent way about our life-saving work.

## OUR PATIENT STORIES

Keeping families together is at the heart of our work, as the reality of cancer treatment for children and young people is often overwhelming.

### Caroline

*"Chemotherapy and its appalling sickness floored Caroline, worsened by the morphine and anti-sickness steroids. Drugs upon drugs upon drugs caused a massive shock to her system. It was unbearable; heart-breaking to witness her suffering and unspeakable to watch the chemotherapy 'poison' pumped into her.*

*Hair loss was a psychological trauma for Caroline. We cut a plait for her to keep and she stopped brushing her hair on learning it would fall out. She slowly came to terms with her baldness despite worries that the hair might re-grow a different colour.*

*When we were told that Caroline was in remission, the news was stunning; too much to take in. Caroline was withdrawn until we got home when she suddenly grabbed me for a rolling-around hug yelling "Yeah!!!" repeatedly before going onto the trampoline and literally jumping for joy for about 10 minutes. There were many, many tears.*

*Cancer has left Caroline with various side effects which may increase over time including possible infertility and a paralysed vocal cord. Incredibly the remaining cord has compensated. It's believed she has Neurofibromatosis predisposing her to future lumps."*

Caroline was diagnosed with Parameningeal Rhabdomyosarcoma (Embryonal) in March 2017. Caroline's mum, Lucy, told their story.

### Bella

*"Cancer is the scariest thing anyone could go through, especially when they are only two years of age. To hear that your baby has Leukaemia, has got to be the hardest thing to hear.*

*Bella really struggled with chemotherapy and we spent month after month in the hospital. When one infection went, she seemed to catch another. At one point I thought that this nightmare would never end. After 10 months of intensive chemotherapy which could be up to four doses of chemotherapy a day, Bella went in maintenance chemotherapy.*

*The difference in Bella is unbelievable. She is happy and has even started to eat again. Her eating is very limited but she is eating enough to say goodbye to the Nasogastric tube. We still have a long way to go and Bella will carry on receiving monthly chemotherapy through her port. Bella is going from strength to strength and I am so proud of her. Bring on ringing that bell."*

Bella was diagnosed with Acute Lymphoblastic Leukaemia in November 2016. Her mum, Lisa, told their story.



## Benji

*"Benji had his last intravenous chemotherapy and steroids in October 2017 and his last oral chemotherapy on 20<sup>th</sup> November 2017, which marked the end of his treatment! Obviously we were very excited about this but somewhat nervous. As much as we were ready for treatment to finish, it feels like we have lost our safety net, but we are confident that Benji will continue to live a happy and healthy life. Benji is very excited to have his last Chemo and is looking forward to having lots of overdue adventures in 2018 when he hopes he will be able to go on a plane to Lapland and a summer holiday with all his family to Italy."*

Benji was diagnosed with Acute Lymphoblastic Leukaemia in 2014. His mum, Louise, told their story.

## Dylan

*"The day of the surgery was long and difficult for all of us. Taking Dylan to theatre knowing that it may be the last time I saw, kissed or held him was torture. I lost count of how many times I wanted to just turn and run with him in my arms, and keep on running until this nightmare was over."*

Unfortunately the nightmare has continued and Dylan's cancer has regrown and spread at an alarming rate. Dylan needs further, more aggressive, more dangerous, more risky, more damaging treatment.

Above all, Dylan, and all the other children with cancer, needs kinder, less damaging and less toxic treatment protocols. These children need the chance to be able to beat cancer and still lead long, happy and healthy lives.

Dylan was diagnosed with Medulloblastoma in 2014. Dylan's Mum, Jessica, shared his experiences with Medulloblastoma with the BBC for Children with Cancer UK's science conference in September 2017. 'Kinder treatments in pipeline' for child brain cancer:

<http://www.bbc.com/news/health-41280700>

## Zunairah

*"This was the day when our lives fell apart and our perfect world turned upside down."*

*"Zuni's treatment lasted over three years. Zunairah had a nasogastric tube and a port on the life-hand side of her chest. This meant that Zuni was very fragile. The chemotherapy caused various dramatic changes in Zuni's appearance. It started with Zuni gaining a large amount of weight, making her look tremendously chubby, even on her face. Zuni's hair began to fall out due to the chemotherapy and soon she had no hair left. Following from this, she also ended up losing a large amount of weight. Our bubbly Zuni soon became moody. As a family we had to keep up with her anger issues and mood swings. Zuni even forgot how to walk. With the help of the nurses and doctors, as a family we worked together to get her walking."*

Zunairah was diagnosed with acute lymphoblastic Leukaemia in January 2015 when she was only one. Her dad, Ayaze, tells their story.

## **FUNDRAISING HIGHLIGHTS**

We are extremely thankful to all our supporters and fundraisers who have made all our work in 2017 possible. Your energy, enthusiasm and positivity have made a huge difference and together we will continue to fight the injustice of cancer in children.

### **Fire and Ice Ball**

In February 2017 supporter Saloni Thakkar organised the Fire and Ice Ball in aid of Children with Cancer UK. The event took place at The Banqueting Suites in Harrow, North West London. Guests were treated to a sumptuous Indian feast and were entertained by a fantastic live auction and band. The event raised over £40,000 for the charity; we are very grateful to Saloni for organising this fabulous event.

### **London Marathon**

On 23<sup>rd</sup> April 2017, 1,400 runners put on their bright and colourful co-branded Mr. Men Little Miss running vests to complete the 26.2 miles of the Virgin Money London Marathon. Together they raised over £2.8M to improve survival rates in childhood cancer.

### **Opera at Syon**

Now in its 26<sup>th</sup> year, our ever popular Opera at Syon raised over £135,000. Diva Opera performed *La Cenerentola* and *La Bohème* in the Great Conservatory at Syon Park on June 28<sup>th</sup> and 29<sup>th</sup> respectively. Champagne, canapés and delicious picnics completed the occasion.

### **The Children with Cancer UK Ball**

This was held on 11<sup>th</sup> November 2017 and raised over £620,000. Grand Auction contributions included over £100,000 towards our welfare activities, supporting families with a child with cancer on their journey. We are very grateful to the Grand Pier in Weston-super-Mare for hosting a day for us. Entertainment highlights included operatic arias from Saira Luther and Robin Bailey, comedy from Hal Cruttenden and dancing to The Drifters and Rollacoaster.

### **Spring into Summer Party**

This annual event was held at Sandro Morelli's Villa Tiberio in Marbella and raised over £49,000. Hosted by actor and comedian Lewis Macleod, guests were entertained by West End stars including Georgina Hagen and Charlotte Wakefield. We are very grateful to Caroline Randerson and Jason Haigh-Ellery for their contributions to arrangements.

### **2017 Prudential RideLondon**

On 30<sup>th</sup> July 2017 we saw nearly 600 cyclists take to the roads for the Prudential RideLondon, taking on the grueling 46 or 100 miles and raising over £315,000 in support of our work.

## **2017 Great North Run**

Over 400 runners took part in the world's biggest half marathon and ran the streets of Newcastle upon Tyne in September raising over £140,000 for the charity.

## **Rat Race**

At the end of 2017 our Rat Race partnership reached its three year target of raising an incredible £1M which we will invest into vital specialist research. In 2017 we had 900 incredible fundraisers who raised over £400,000 for Children with Cancer UK. We believe 2018 will be our biggest year yet in terms of supporters and money raised. Our goal over the next two years is to raise another huge £1 million.

## **The White Collar Boxing Company**

The White Collar Boxing Company has been supporting Children with Cancer UK for the last 3 years. They provide amateur boxers an opportunity of a free eight week training programme delivered by experts. While training, the boxers fundraise for Children with Cancer UK. Last year they raised over £28,000. We would like to thank The White Collar Boxing Company for their continued support.

## **Team Will LXX**

Team Will LXX is a group of people of all ages and interests, who share the commitment to help raise vital funds for childhood cancer research through a variety of activities and events. The team ran, cycled, baked and trekked their way to raising an incredible total of £58,000. We want to say a huge thank you to everyone in Team Will LXX for their hard work and dedication to supporting Children with Cancer UK.

## **Linda's Lottery**

In 2017 we have continued to significantly invest in our weekly lottery programme, Linda's Lottery, and we now have over 10,000 active entries each week. This has primarily been thanks to our investment in cold telemarketing. The telephone has also been used effectively to reactivate cancelled lottery players, upgrade the number of lines played by existing supporters and to convert raffle players into lottery players.

Linda's Lottery has raised almost £500,000 in 2017, meaning that since Linda's Lottery was launched in 2015, it has raised over £900,000 to help fund life-saving research in to more effective and kinder treatments for childhood cancer.

This conversational approach will be used in 2018 to continue to grow the Linda's Lottery player file and to help us exceed £1M raised from this fundraising product.

## **Regular Giving programme**

The regular giving programme in 2017 has primarily focused on Direct Response TV (DRTV), with two bursts of train and tube advertising March and December.

## **Weston-super-Mare**

In April we invited families with a child with cancer to join us for a VIP day out at the Grand Pier in Weston-super-Mare. The families received free access to all the rides, a buffet lunch in the regency suite and entertainment from magician Richard Ballinger.

*"The children really had the best time being children with no fears or worries. It is an amazing opportunity for them to forget they have cancer and just feel happy. Amazing day and great staff."* - The Baker Family.

## **Corporate Partnership Highlights**

We are extremely grateful to every company that supported us in 2017. The dedication, ambition and passion of their staff helped raise vital funds for specialist research and raise awareness of what it is like for children and young people to live with cancer. We have highlighted some of the wonderful ways companies raised money for us in 2017.

In 2017 we undertook a review of our Corporate Fundraising strategy. This led to us appointing two Senior Managers in the area of Corporate Partners and Philanthropy. Whilst these appointments only began employment in December 2017, we are pleased to report the securing of new partnerships with Lawrence Stephens, EG Carter, RML, Nestle, Crown Paints and the retention of Coral that shall equate to incremental revenue in 2018.

### **Coral**

We were delighted to continue our relationship with Coral for 2017 and are very pleased to have also had it confirmed that this shall continue into 2018 with a renewed marketing campaign around the scratch cards and a proposition launch around the Grand National.

By the end of 2017 Coral had raised a staggering figure of almost £2.5 million towards our life-saving work, through our four years of partnership with them. The staff at Coral have embraced Children with Cancer UK and undertaken amazing tasks and challenges to fundraise for our vital research.

In addition to staff fundraising, the sale of scratch cards has continued raising over £1M as Children with Cancer UK's receive 20% of the face value of each card sold in £1, £2, £5 and £10 denominations.

Donal McCabe, Group Communications Director, who confirmed the continued relationship into 2018 stated that he was looking forward to our continued relationship and the success of the relaunch around the Grand National Campaign.

## **RS Components**

Our partnership with RS Components continued into its third year in 2017 and we're delighted that RS Components has already announced the partnership will continue into 2018.

The staff at RS Components have continued to enthusiastically embrace Children with Cancer UK, taking on multiple challenges and supporting us at many of our events, raising over £100,000 toward the vital research that we continue to invest in.

We also had the opportunity to address their entire business, 1,000 strong at their annual conference in March 2018 to further promote Children with Cancer UK and demonstrate to their staff the value of their fundraising activity.

Carly Millership, Director of Communications for Northern Europe, said *"I have some really exciting news to share with you... We have decided to continue to support Children with Cancer UK for another 12 months. We feel that this is the right decision, based on the relationship that we have built with you guys over the last year and we're keen to continue that. Personally, I'm really thrilled that we can continue to work together and build on our partnership"*.

## FUNDRAISING COMPLIANCE

Children with Cancer UK values the privacy of all those who support us in our work; we have systems in place to ensure that supporter data is collected, managed and processed in line with all necessary legislation. We are members of the Fundraising Regulator, which has responsibility for regulating fundraising, sets out the Code of Fundraising Practice and investigates and takes appropriate action on cases of public concern. Children with Cancer UK adheres to the Code of Fundraising Practice and also fully complies with the Fundraising Preference Service.

Children with Cancer UK works with a few professional fundraising agencies to assist with certain elements of our fundraising, by telephone and SMS channels. We have robust contracts in place with these agencies, specifying that staff carrying out these activities should be trained and adhere to all applicable laws, regulations and codes, such as the Code of Fundraising Practice and the Data Protection Regulations. We also expect these organisations to reflect our values when talking to supporters and to voluntarily subscribe to the Fundraising Regulator.

To ensure the agencies we engage are operating to the required standards and that people should never feel harassed or pressurised to give, we carry out appropriate monitoring which includes: call monitoring, site visits and live call listening and mystery shopping. We attend training sessions of their staff and give training to staff in respect of each fundraising campaign. We require all our staff and the agencies we deal with to comply with our Vulnerable People Policy, which provides guidance on how to identify a potentially vulnerable person and actions to take to considerably disengage from the fundraising process.

Children with Cancer UK require its staff and any agencies contacting our donors and members of the public on our behalf to comply with the Data Protection Law and guidelines provided by the Fundraising Regulator and Institute of Fundraising. Children with Cancer UK take all reasonable care to protect vulnerable adults in accordance with the Institute of Fundraising guidance set out in their document 'Treating Donors Fairly: Responding to the needs of People in Vulnerable Circumstances and Helping Donors make informed Decisions.'

We will continue to closely monitor all of our fundraising activities and will always strive to ensure they are of the highest standard and reflect the wishes and preferences of all our generous supporters. There may be occasions when we have not met these high standards and we will work hard to learn from our mistakes and to make sure they don't happen again. If our supporters and members of the public are unhappy with any aspect of our work we encourage them to give feedback, and take any comment or complaint seriously. Complaints are investigated thoroughly and corrective action taken as appropriate. During our financial year (Jan – Dec) 2017 we received 121 complaints which represents approx. 0.0025% of contacts with supporters, donors and prospective donors.

As a charity with a weekly lottery draw, Linda's Lottery and a number of Grand Draws throughout the year, Children with Cancer UK is registered with the Gambling Commission and CFP Ltd is our appointed external lottery manager.

To ensure we are compliant with the new Data Protection Regulations coming into force in May 2018, we updated our Privacy Policy in May 2017. We will also be publishing our revised complaints/feedback policy and procedure, together with a new Supporter Charter in early 2018.

## **THANK YOU**

We would like to say a very sincere and warm thank you to everyone who helped support our life-saving work in 2017. Although we are only able to thank a small number of people here, we offer huge gratitude to all our supporters for their help in keeping families together in 2017.

A very special and deep thank you to all the extraordinary families who have kindly shared their experiences in 2017. Your involvement is central to our work and your help in raising awareness and vital funds to help young cancer patients is invaluable.

Our heartfelt thanks go to:

Caroline Randerson

Lady Julia Craig Harvey and Mrs Peter Hargreaves-Allen, Chairs of the Opera at Syon Committee and the Committee Members

Stephen Haines, Chair of the Children with Cancer UK Ball Committee and Committee Members

Richard Harley, Chair of the Quiz Party Committee and Committee Members

London Marathon Events

Rat Race Events

White Collar Boxing Company

Top Model

## STRATEGIC PLANS 2018-2020

The funding and development of Precision Medicine and our other research projects have further increased our reputation and credibility as a key funder of vital paediatric cancer research projects. In 2017 Children with Cancer UK undertook a strategic review. In order to grow our income and increase the amount of money we can invest each year in research and welfare projects, we developed a new vision, mission, strategic goals, strategic pillars and strategic imperatives, which we highlight below.

### **Our vision: A world where no child dies of cancer**

#### Strategic goals:

- 1) To become, and continue to hold position, as the UK's largest not-for-profit financial contributor to paediatric and young person cancer research.
- 2) To grow net income for investment in Charitable Activities to £15M per annum by 2020.  
Our mission: To improve survival rates and the quality of survival in young cancer patients and to find ways to prevent cancer in the future.

Our brand promise: We actively raise and invest money for vital specialist research to help save the life of every child and young person with cancer and keep their family together.

#### Strategic pillars (funding focus) and Supporting Goals

- Awareness and Education
- Immunotherapy
- Precision Medicine
- Respite Homes and Welfare
- Prevention

#### Strategic Imperatives

- 1) We will aim to be the biggest not-for-profit annual financial contributor to research into cancer in children and young people in the UK
- 2) We will maintain a place in the top 100 UK charities, based on fundraising activity
- 3) We will continue to support respite homes and associated financial support for children and families affected by childhood cancer
- 4) We will fund high quality research aimed at developing treatments which are not only more effective but less debilitating and disruptive to young lives
- 5) We will contribute to peer reviewed research into the discovery and reduction of causes of cancer, including directly supporting the work of the International Agency for Research in Cancer (IARC, part of WHO)



- 6) We will provide capital funding to encourage the development of centres of excellence in childhood cancer research
- 7) We will raise public awareness about our activities and the results of relevant research
- 8) We will seek to influence the development of policy to promote the best interests of children with or at risk of cancer
- 9) We will continue to be a highly engaged and effective organisation that recognises and rewards the right behaviours, innovation and outcomes for the organisation and for those we help
- 10) We will manage risk effectively and in a timely manner.

The trading subsidiary will continue to operate on the same scale and no significant changes are planned.

## FINANCIAL REVIEW



## Financial review

The Consolidated Statement of Financial Activities (SOFA) set out on page 45, shows the financial results for Children with Cancer UK and its trading subsidiary: Helping Children with Cancer Limited.

Whilst our income has fallen from £16.5M to £14.3M, we have been able to award our highest ever annual grant funding of £7.2M demonstrating our intent to fund ground-breaking research. A significant area of funding has been on Precision Medicine with us investing over £3.74M this year in furthering this essential research.

Our income has fallen as we adjust our fundraising strategy and scale back on cold recruitment activity through our seasonal appeals – notably income from appeals has fallen this year by £350,000. In addition, we were in the final stages of our scratch card partnership with Gala Coral Group and this, along with a fall in legacy income, has contributed to a fall of over £1M income. With the confirmation of the continued relationship with Gala Coral Group into 2018 it is anticipated income from the scratch cards will be revived.

We have observed growth in other fundraising areas and hope to continue building on momentum within our corporate, trusts and major donor income streams as part of our new fundraising focus. Our sports events performance goes from strength to strength and, at £4.4M, represents our biggest income stream. Much of this income is raised through the charity purchasing places in sporting events, such as the London Marathon, and allocating these to fundraising participants.

We have continued to invest in online and mainstream media, to secure additional sustainable income as well as create awareness of our cause. The £1.3M investment this year will continue to give us the exposure that supports our fundraising and awareness raising activities. It also assists us in maintaining a steady stream of regular givers to give us long-term sustainable income. We now have 27,000 regular givers through various channels, and this is our highest ever total. This is in addition to the 7,000 regular players of the weekly lottery justifying our investment into this fundraising stream in recent years.

- 50p on research projects
- 19p on welfare projects
- 14p on raising awareness

We reinvest 17p from every £1 raised, to raise even more money.

**For every £1 we spend on fundraising, we raise over £5 more.**

## **Reserves**

At the end of the year, the charity held £9,544,308 (2016: £10,829,380) in unrestricted reserves.

Unrestricted reserves are generated when the supporter does not stipulate how the income may be spent. They are therefore available to be applied at the discretion of Trustees to any of the charity's charitable purposes. It is the intention of Trustees to expend these funds as soon as possible whilst using them in a structured manner to meet their long term objectives.

The Trustees consider the reserves to have a dual role; to provide a buffer to allow operating expenditure to be carefully minimised should the need arise, as well as facilitate the following year's grant award programme of at least £5.5M. The remainder, approximately £4M, is set aside for fluctuations in income that could impact the charity's ability to carry out its services. The Trustees consider that, as this amount is within the range of 25% and 35% of the current year's income, this is a reasonable buffer to have in place as a contingency.

## **Going Concern**

The charity has a strong reserve position and has sufficient available resources, as demonstrated by the reserve policy above. We have adequate financial resources and are well placed to manage the business risks. Our planning process, including financial projections, has taken into consideration the current economic climate and its potential impact on the various sources of income and planned expenditure.

Our cash deposits could easily be drawn down should working capital be required. We believe that there are no material uncertainties that call into doubt the charity's ability to continue. The accounts have therefore been prepared on the basis that the charity is a going concern.

## **Investments**

The Memorandum of Association allows the charity to deposit or invest funds in any manner but to invest only after obtaining such advice from a financial expert as the Trustees consider necessary and having regard to the suitability of investments and the need for diversification.

The charity recognises that it must have enough resources to carry out its present and future activities effectively. Therefore the Trustees have agreed to hold sufficient cash levels, invested mainly in instant access deposits, to meet fluctuating needs.

The charity investment policy is reviewed regularly and states that the longer term funds must produce the best financial return for an acceptable risk. The fund must balance the need to support research grants with the objective for capital growth and inflation protection. The Trustees feel the 2017 performance of the investments met the objectives of the policy and recognise the opportunity to identify higher performing funds for 2018 whilst still within an acceptable risk.

The charity currently holds £14.6M of investments held for the longer term. This comprises £1.7M in an investment portfolio managed by Barclays Investment Managers and £10.1M in cash deposits. The charity also holds £2.8M in short term cash deposits.

The Trustees are keen to ensure that the cash funds are not exposed to any risk since this cash value has already been promised to grant holders. As at 31<sup>st</sup> December 2017, our grant liabilities are close to £12M (2016: £11.9M).

## **Risk and internal control**

The Trustees have overall responsibility for ensuring that the Charity has an appropriate system of controls, financial and otherwise. They are also responsible for safeguarding the assets of the Charity and hence for taking reasonable steps for the prevention and detection of fraud and other irregularities and to provide reassurance that:

- its assets are safeguarded against unauthorised use or disposition;
- proper records are maintained and financial information used within the Charity or for publication is reliable; and
- the Charity complies with relevant laws and regulations.

As part of the Charity's risk management process the Trustees acknowledge their responsibility for the Charity's system of internal control and reviewing its effectiveness. It is also recognised by the Trustees that such a system is designed to manage rather than eliminate the risk of failure to achieve the Charity's objectives and can only provide reasonable, not absolute, reassurance against material misstatement or loss.

During the year, a strategic risk review was carried out in order to identify the principal risks and uncertainties currently impacting the Charity along with the mitigation strategy in place to manage these risks. This has been carried out to identify areas where we should focus our risk management next year.

## **Principal risks and uncertainties**

With the Charity being heavily reliant on mainstream fundraising income to fund charitable activity, the major risk being faced is that income falls to a level that compromises the Charity's ability to meaningfully fund future charitable activity – whilst at the same time maintaining reserves at a stable level. This risk is being actively managed by the Charity by diversifying its income streams and investing in new fundraising channels. Furthermore, the Charity is currently in the process of implementing 'strategic imperatives' that will guide its future vision and strategy.

A major risk for the Charity is the impact of compliance to the newly formed General Data Protection Regulator (GDPR) and Fundraising Regulator. Due to the nature of the Charity's dominant fundraising stream being direct mail and individual giving activities, this has necessitated a fundamental shift in the way the Charity communicates with its supporters. The Charity has responded to this risk by creating a new role of Head of Compliance and Stewardship that is tasked with ensuring compliance by reviewing and making necessary amendments to policies, procedures and documentation using a timetable agreed by the Trustees.

This year the Charity has also managed the risks associated with having an effective profile by solidifying its brand, upgrading its website and continuing with its awareness activity in the media. Next year the Charity will publish its first Impact Report highlighting the effectiveness of the research it has proactively funded.

The principal risk for the trading subsidiary is its reliance on short term and ad hoc commercial arrangements to generate income. We are investing in improving our merchandising and trading income streams to manage this risk.

### **Structure, governance and management**

The financial statements comply with current statutory requirements, the Memorandum and Articles of Association, Statement of Recommended Practice (SORP FRS 102) and current accounting standards (FRS 102).

The trustees are aware of The Charity Governance Code published in 2017 which sets out the principles and recommended practice for good governance within the sector. The Charity is reviewing its current governance arrangements against the principles within the code and will address any issues raised.

### **Governing documents**

These financial statements are for Children with Cancer UK and its subsidiary Helping Children with Cancer Limited.

Children with Cancer UK is a company limited by guarantee and operates under its Memorandum and Articles of Association dated 11<sup>th</sup> November 2003 as amended by special or written resolutions, dated 30<sup>th</sup> November 2004, 22<sup>nd</sup> December 2006, 12<sup>th</sup> May 2007 and 28<sup>th</sup> July 2016. On 14<sup>th</sup> May 2007 the reporting charity changed its name from CHILDREN with LEUKAEMIA UK to Children with Cancer UK. However, the charity continued to use the working name of CHILDREN with LEUKAEMIA until 11<sup>th</sup> May 2011.

The charity operates under its Trust Deed (dated 4<sup>th</sup> January 1988) and Variation of Trust Deed (dated 10<sup>th</sup> December 2003).

## **Aims and Objectives**

### **Purposes and Aims**

The charity's objects as amended by written resolution of 12<sup>th</sup> May 2007, and 28th July 2016 are shown below:

- i) To promote the relief of children and young people suffering with leukaemia or any other form of cancer (and allied disorders) and of their families;
- ii) To raise public awareness and knowledge in matters relating to leukaemia or any other form of cancer (and allied disorders) affecting children and young people; and
- iii) To promote research into the causes, alleviation, prevention, treatment and cure of leukaemia or any other form of cancer (and allied disorders) affecting children and young people and to publish the useful results of such research.

Our aims are to determine the causes, find the cure and provide care for children with cancer.

We fund life-saving research into the causes, prevention and treatment of childhood cancer.

We fund innovative welfare projects to provide better care for young cancer patients and their families.

We campaign to raise awareness of childhood cancer to protect more children and to improve the lives of young cancer patients, today and for future generations.

We are a member of the Association of Medical Research Charities.

We are also a member of the National Cancer Research Institute.

Further details of the projects we fund are detailed in note 21.

### **Public Benefit**

The Trustees continue to give due regard to the public benefit provided by the charity in relation to its charitable purpose as set out by the objectives above and have given due consideration to the relevant guidance issued by the Charity Commission. The Trustees will continue to ensure that the activities that promote the charitable objects above will be applied to provide public benefit.

## **Board of Trustees**

The governing body of the reporting charity is the Board of Trustees, which has a total of five members (2016: five). The Trustees of the charity also act as the Directors of the charitable company. The Board meets at least three times a year together with the Chief Executive and other senior management where appropriate.

## **Trustee appointment and induction**

There were no new appointments to the Trustee Board in 2017 (2016: one). The selection of Trustees is made based on vacancies arising, sympathy with the objects of the charity and the additional skills and experience that potential new Trustees are able to afford. Under the Articles of Association, Trustees are appointed by a majority vote of the members (who are all the current Trustees) by ordinary resolution.

Each new Trustee receives the Charity Commission publication 'The Essential Trustee: What you need to know' as well as the most recent published annual report. The Chief Executive offers an induction day to all Trustees which provides full information about the operations of the charity.

## **Management**

The Trustees exercise executive responsibility for the governance of the charity and, through the Chairman, supervise the management of the charity by the Chief Executive and the senior management team. The Chairman and Chief Executive also task the Board with decision-making on strategic management issues as well as overseeing the research grants application process and monitoring the progress of awarded grants.

The senior management carry out the operational running of the charity and the coordinating of fundraising appeals and events.

## **Remuneration**

The salaries of Children with Cancer UK staff are periodically benchmarked against other charities to ensure that salary levels are in line with industry averages and sufficient to attract and retain staff of the appropriate calibre. All staff posts are periodically evaluated to ensure that salary levels are reflective of industry and organisational needs, as well as individual and charity performance. In recruitment of a new post, an assessment is made of the requirements of the role in terms of skills, experience, competency and urgency. The salary is then determined on the basis of this assessment and the current market conditions. The Charity is in the process of implementing transparent salary scales and banding for all staff.



A comprehensive salary review was carried out during the year which showed that the Charity pays staff competitively and fairly when benchmarked against the sector. The Charity has been compliant with the Hutton Fair Pay Review with the salary of the highest paid employee being no more than four times the median salary of the organisation.

### **Trading Subsidiaries**

Helping Children with Cancer Limited (company registration 2807553) is the wholly owned trading subsidiary of Children with Cancer UK. Its principal purpose is to raise funds for the charity and all profits are donated under Gift Aid.

The principal activity of the Company is the licensing of the name and logo of the charity for use in corporate sponsorship and commercial agreements.

The trading activities generated profit for the year of £45,532 (2016: £70,383) which will be paid to Children with Cancer UK under the Gift Aid Scheme. It is anticipated that the trading activity within the subsidiary will continue at a similar level during the current year.

The trading subsidiary holds assets of £182,535 and liabilities of £136,903 with funds of £45,532 as at 31<sup>st</sup> December 2017.

The charity also holds 100% of the share capital of Children with Cancer Research Limited (09442350) which is currently dormant.

### **Related parties**

The Charity has a conflict of interest policy in place which accompanies the declaration of interests submissions completed by all Trustees and senior management. An internal conflict of interest register is in place which is updated when a conflict of interest has been identified and is reviewed at least annually.

## **Grant making policy**

It is the Trustees' policy to maximise the proportion of its charitable output that is achieved through grant making.

### **Welfare grants**

There is no open application process for welfare grants and no welfare grants are given to individuals. The Trustees determine which organisations are to be supported. In 2017, a total of £1,392,000 (2016: £1,034,596) was awarded to welfare projects.

### **Research grants**

An increasing proportion of the charity's output is achieved through scientific and medical research. The charity adheres to the standards set by the Association of Medical Research Charities (AMRC) and awards research grants after deliberation and approval of its own Scientific Advisory Panel. In 2017, a total of £5,809,895 (2016: £4,137,717) was awarded to research projects.

Project funding in these areas is directed in two ways:

#### **1. Research into treatment**

The charity works in partnership with Bloodwise, Great Ormond Street Hospital Children's Charity, University College London, Cancer Research UK and other institutions giving grants in support of the parts of their programmes that are relevant to the charity's objects.

#### **2. Research into prevention and causes**

The charity advertises for project applications that are then subject to peer review and scrutiny by our panel of scientific advisors before the Trustees determine which projects to support.

It is also the Trustees' policy to support directly a number of long-term programmes of research at UK institutions in areas which are of wide ranging importance in relation to childhood cancer.

The Trustees openly invite research applications and the criteria are displayed on our website as well as by advertisements in scientific publications.

## **REFERENCE AND ADMINISTRATION**

Children with Cancer UK (previously known as CHILDREN with LEUKAEMIA UK) was set up in memory of Paul O’Gorman who died on 6th February 1987 and his sister Jean, who died on 3rd November 1987. The charity was inaugurated by Diana, Princess of Wales on 12th January 1988 at Mill Hill County High School where Paul had been a pupil.

### **Trustees**

The Trustees of Children with Cancer UK are the charity’s Trustees under charity law and the directors of the charitable company:

Eddie O’Gorman OBE (Founder and Chair of Trustees)  
The Rt Hon the Earl Cadogan KBE DL (Resigned 12th January 2018)  
Sandra Mileham  
Linda Robson  
Alasdair Philips  
Russell Smith (Appointed 12th January 2018)

### **Chief Executive Officer**

Cliff O’Gorman (Resigned 30<sup>th</sup> June 2018)  
Dhivya O’Connor (Appointed 1<sup>st</sup> July 2018)

### **Senior Management**

Cliff O’Gorman (Chief Executive) (Resigned 30<sup>th</sup> June 2018)  
Dhivya O’Connor (Appointed CEO 1<sup>st</sup> July 2018, previously Chief Operating Officer)  
Jason Rigby (Director of Fundraising & Communications) (Appointed 1<sup>st</sup> August 2018)  
Pippa Gough (Head of Compliance, I.T. and Supporter Care)  
Camelia Vasilcan (Head of Database Operations)  
Mark Hooley (Head of Marketing & Communications)  
Gary Murphy (Head of Finance) (Appointed 1<sup>st</sup> November 2017)  
Ben Twyman (Head of Events) (Resigned 25<sup>th</sup> May 2018)  
Emma Sheard (Head of Individual Giving) (Resigned 12<sup>th</sup> April 2018)

### **Registered Charity Number**

298405

### **Registered Company Number**

4960054

**Principal office**

51 Great Ormond Street, London WC1N 3JQ

**Solicitors**

Bates Wells Braithwaite, 2-6 Cannon Street, London EC4M 6YH

**Auditors**

Crowe U.K. LLP, St Bride's House, 10 Salisbury Square, London EC4Y 8EH.

On 25 June 2018, Crowe Clark Whitehill LLP changed its name to Crowe U.K. LLP

**Bankers**

National Westminster Bank plc, 30 North Audley Street, London W1A 4UQ

**Contact details**

Children with Cancer UK

51 Great Ormond Street, London WC1N 3JQ

Tel: 020 7404 0808

Fax: 020 7404 3666

Email: [info@childrenwithcancer.org.uk](mailto:info@childrenwithcancer.org.uk)

[www.childrenwithcancer.org.uk](http://www.childrenwithcancer.org.uk)

## Scientific Advisory Panel

We are indebted to the members of our Scientific Advisory Panel who freely give their time and expertise to help drive forward our fight against childhood cancer.

Research into childhood cancer is a broad field and we aim to reflect the diversity of the field amongst the membership of our Panel:

Professor Silvia Marino MD, FMH-Path. Professor of Neuropathology and Honorary Consultant Neuropathologist, Blizard Institute, Barts and the London School of Medicine, Queen Mary University of London.

Dr Yann Jamin BSc (Hons), PhD. Paul O’Gorman Postdoctoral Fellow, The Institute of Cancer Research

Professor Pamela Kearns MBChB, BSc (Hons), PhD, FRCPCH. Professor of Clinical Paediatric Oncology, School of Cancer Sciences, University of Birmingham; Honorary Consultant in Paediatric Oncology, Birmingham Children’s Hospital

Dr Matthew Murray MB BChir, MA, FRCPCH, DCH, PGCME, PhD. Academic Consultant Paediatric Oncologist, Addenbrooke’s Hospital; University Lecturer, University of Cambridge

Mr Charles Stiller. Lead on Childhood Cancer, National Cancer Intelligence Network, Public Health England

Professor David Walker BMedSci, BM, BS, FRCP, FRCPCH (Chair). Professor of Paediatric Oncology, Children’s Brain Tumour Research Centre, University of Nottingham; Honorary Consultant in Paediatric Oncology, Nottingham Children’s Hospital (QMC Campus NUH NHS Trust).

Dr Owen Williams BSc (Hons), PhD. Reader in Cancer Biology and Head of Cancer Section, UCL Great Ormond Street Institute of Child Health and Great Ormond Street Hospital for Children NHS Trust

## **STATEMENT OF TRUSTEES' RESPONSIBILITIES**

The Trustees (who are also directors of Children with Cancer UK for the purposes of company law) are responsible for preparing the Strategic Report, the Trustees' Report and the financial statements in accordance with applicable law and regulations.

Company law requires the Trustees to prepare financial statements for each financial year. Under company law the Trustees must not approve the financial statements unless they are satisfied that they give a true and fair view of the state of affairs of the charitable company and the group and of the incoming resources and application of resources, including the income and expenditure, of the charitable company and the group for that period. In preparing these financial statements, the Trustees are required to:

- select suitable accounting policies and then apply them consistently;
- observe the methods and principles in the Charities SORP;
- make judgments and estimates that are reasonable and prudent;
- state whether applicable UK accounting standards have been followed, subject to any material departures disclosed and explained in the financial statements; and
- prepare the financial statements on the going concern basis unless it is inappropriate to presume that the charitable company and group will continue in business.

The Trustees are responsible for keeping adequate accounting records that are sufficient to show and explain the charitable company's transactions, disclose with reasonable accuracy at any time the financial position of the charitable company and enable them to ensure that the financial statements comply with the Companies Act 2006 and the provisions of the charity's constitution. They are also responsible for safeguarding the assets of the charity and the group and hence for taking reasonable steps for the prevention and detection of fraud and other irregularities.

Insofar as each of the Trustees of the charitable company at the date of approval of this report is aware there is no relevant audit information (information needed by the charitable company's auditor in connection with preparing the audit report) of which the charitable company's auditor is unaware. Each Trustee has taken all of the steps that he/she should have taken as a Trustee in order to make himself/herself aware of any relevant audit information and to establish that the charitable company's auditor is aware of that information.

This Annual Report of the Trustees, prepared under the Charities Act 2011 and the Companies Act 2006, was approved by the Board of Trustees on 10<sup>th</sup> September 2018 including approving in their capacity as company directors the Strategic Report contained therein, and is signed as authorised on its behalf by:



**Eddie O'Gorman OBE**  
**Founder and Chair of Trustees**

**Date: 10<sup>th</sup> September 2018**

## **Independent Auditor's Report to the Trustees of Children with Cancer UK**

### **Opinion**

We have audited the financial statements of Children with Cancer UK for the year ended 31<sup>st</sup> December 2017 which comprise the Group Statement of Financial Activities, the Group and Company Balance Sheets, the Group Cash Flow Statement and notes to the financial statements, including a summary of significant accounting policies. The financial reporting framework that has been applied in their preparation is applicable law and United Kingdom Accounting Standards, including Financial Reporting Standard 102. The Financial Reporting Standard applicable in the UK and Republic of Ireland (United Kingdom Generally Accepted Accounting Practice).

This report is made solely to the charitable company's members, as a body, in accordance with Chapter 3 of part 16 of the Companies Act 2006. Our audit work has been undertaken so that we might state to the charitable company's members and trustees those matters we are required to state to them in an auditor's report and for no other purpose. To the fullest extent permitted by law, we do not accept or assume responsibility to anyone other than the charitable company, the charitable company's members as a body and the charitable company's trustees as a body, for our audit work, for this report, or for the opinions we have formed.

In our opinion the financial statements:

- give a true and fair view of the state of the group's and the charitable company's affairs as at 31<sup>st</sup> December 2017 and of the group's incoming resources and application of resources including its income and expenditure for the year then ended;
- have been properly prepared in accordance with United Kingdom Generally Accepted Accounting Practice; and
- have been prepared in accordance with the requirements of the Companies Act 2006.

### **Basis for opinion**

We conducted our audit in accordance with International Standards on Auditing (UK) (ISAs (UK)) and applicable law. Our responsibilities under those standards are further described in the Auditor's responsibilities for the audit of the financial statements section of our report. We are independent of the group in accordance with the ethical requirements that are relevant to our audit of the financial statements in the UK, including the FRC's Ethical Standard, and we have fulfilled our other ethical responsibilities in accordance with these requirements. We believe that the audit evidence we have obtained is sufficient and appropriate to provide a basis for our opinion.

### **Conclusions relating to going concern**

We have nothing to report in respect of the following matters in relation to which the ISAs (UK) require us to report to you where:

- the trustees' use of the going concern basis of accounting in the preparation of the financial statements is not appropriate; or
- the trustees have not disclosed in the financial statements any identified material uncertainties that may cast significant doubt about the group's or the charitable company's ability to continue to adopt the going concern basis of accounting for a period of at least twelve months from the date when the financial statements are authorised for issue.

### **Other information**

The trustees are responsible for the other information. The other information comprises the information included in the annual report, other than the financial statements and our auditor's report thereon. Our opinion on the financial statements does not cover the other information and, except to the extent otherwise explicitly stated in our report, we do not express any form of assurance conclusion thereon.

In connection with our audit of the financial statements, our responsibility is to read the other information and, in doing so, consider whether the other information is materially inconsistent with the financial statements or our knowledge obtained in the audit or otherwise appears to be materially misstated. If we identify such material inconsistencies or apparent material misstatements, we are required to determine whether there is a material misstatement in the financial statements or a material misstatement of the other information. If, based on the work we have performed, we conclude that there is a material misstatement of this other information, we are required to report that fact.

We have nothing to report in this regard.

### **Opinions on other matters prescribed by the Companies Act 2006**

In our opinion based on the work undertaken in the course of our audit

- the information given in the trustees' report, which includes the directors' report and the strategic report prepared for the purposes of company law, for the financial year for which the financial statements are prepared is consistent with the financial statements; and
- the strategic report and the directors' report included within the trustees' report have been prepared in accordance with applicable legal requirements.



### **Matters on which we are required to report by exception**

In light of the knowledge and understanding of the group and the charitable company and their environment obtained in the course of the audit, we have not identified material misstatements in the strategic report or the directors' report included within the trustees' report.

We have nothing to report in respect of the following matters in relation to which the Companies Act 2006 require us to report to you if, in our opinion:

- the parent company has not kept adequate accounting records;
- the parent company financial statements are not in agreement with the accounting records and returns; or
- certain disclosures of trustees' remuneration specified by law are not made; or
- we have not received all the information and explanations we require for our audit.

### **Responsibilities of trustees**

As explained more fully in the trustees' responsibilities statement set out on page 37, the trustees (who are also the directors of the charitable company for the purposes of company law) are responsible for the preparation of the financial statements and for being satisfied that they give a true and fair view, and for such internal control as the trustees determine is necessary to enable the preparation of financial statements that are free from material misstatement, whether due to fraud or error.

In preparing the financial statements, the trustees are responsible for assessing the group's or the charitable company's ability to continue as a going concern, disclosing, as applicable, matters related to going concern and using the going concern basis of accounting unless the trustees either intend to liquidate the charitable company or to cease operations, or have no realistic alternative but to do so.

### **Auditor's responsibilities for the audit of the financial statements**

Our objectives are to obtain reasonable assurance about whether the financial statements as a whole are free from material misstatement, whether due to fraud or error, and to issue an auditor's report that includes our opinion. Reasonable assurance is a high level of assurance, but is not a guarantee that an audit conducted in accordance with ISAs (UK) will always detect a material misstatement when it exists. Misstatements can arise from fraud or error and are considered material if, individually or in the aggregate, they could reasonably be expected to influence the economic decisions of users taken on the basis of these financial statements.

A further description of our responsibilities for the audit of the financial statements is located on the Financial Reporting Council's website at: [www.frc.org.uk/auditorsresponsibilities](http://www.frc.org.uk/auditorsresponsibilities). This description forms part of our auditor's report.



**Pesh Framjee**  
Senior Statutory Auditor  
For and on behalf of  
Crowe U.K. LLP  
Statutory Auditor  
London

Date: 21 September 2018

**Consolidated statement of financial activities for the year ended 31 December 2017  
(Incorporating an income and expenditure account)**

	Note	Total restricted funds	Total unrestricted funds	Total 2017	Total 2016
		£	£	£	£
<b>Income from:</b>					
Donations and legacies	4	413,750	12,936,943	13,350,693	15,582,421
Other trading activities	4	-	867,174	867,174	750,973
Income from investments		-	106,057	106,057	142,735
Other income		-	8,423	8,423	48,287
<b>Total Income</b>	17	<b>413,750</b>	<b>13,918,597</b>	<b>14,332,347</b>	<b>16,524,416</b>
<b>Expenditure on:</b>					
Raising funds		-	2,606,851	2,606,851	2,520,561
Charitable activities	8	203,546	12,908,999	13,112,545	11,791,787
<b>Total Expenditure</b>	6,16	<b>203,546</b>	<b>15,515,850</b>	<b>15,719,396</b>	<b>14,312,348</b>
Net change in investments	10	-	101,977	101,977	186,499
<b>Net income/(expenditure)</b>		<b>210,204</b>	<b>(1,495,276)</b>	<b>(1,285,072)</b>	<b>2,398,567</b>
<b>Transfers between funds</b>	17	<b>(210,204)</b>	<b>210,204</b>	<b>-</b>	<b>-</b>
<b>Net movement in funds</b>		<b>-</b>	<b>(1,285,072)</b>	<b>(1,285,072)</b>	<b>2,398,567</b>
Reconciliation of funds:					
<b>Total funds brought forward</b>		<b>-</b>	<b>10,829,380</b>	<b>10,829,380</b>	<b>8,430,813</b>
<b>Total funds carried forward</b>	17	<b>-</b>	<b>9,544,308</b>	<b>9,544,308</b>	<b>10,829,380</b>

The comparative figures for each fund are shown in note 3 to the financial statements.

## Balance sheet as at 31 December 2017

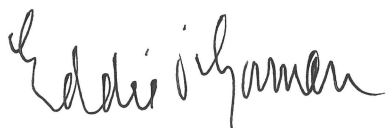
Company Number: 4960054

		2017		2016	
	Note	Group	Charity	Group	Charity
		£	£	£	£
<b>Fixed assets</b>					
Investments	10	14,581,097	14,581,197	10,417,452	10,417,552
		<b>14,581,097</b>	<b>14,581,197</b>	<b>10,417,452</b>	<b>10,417,552</b>
<b>Current assets</b>					
Debtors and prepayments	12	3,014,771	3,114,043	2,351,499	2,387,565
Cash deposits		4,338,183	4,338,183	10,272,332	10,272,332
Cash at bank and in hand		1,136,997	1,002,302	402,077	366,152
		<b>8,489,951</b>	<b>8,454,528</b>	<b>13,025,908</b>	<b>13,026,049</b>
<b>Creditors: amounts falling due within one year</b>					
Grants	13, 14	(6,869,160)	(6,869,160)	(6,303,885)	(6,303,885)
Other	14	(715,508)	(725,717)	(678,968)	(679,209)
<b>Net current assets</b>	16	<b>905,283</b>	<b>859,651</b>	<b>6,043,055</b>	<b>6,042,955</b>
<b>Total assets less current liabilities</b>		<b>15,486,380</b>	<b>15,440,848</b>	<b>16,460,507</b>	<b>16,460,507</b>
<b>Creditors: amounts falling due after more than one year</b>					
Grants	13	(5,942,072)	(5,942,072)	(5,631,127)	(5,631,127)
<b>Net assets</b>		<b>9,544,308</b>	<b>9,498,776</b>	<b>10,829,380</b>	<b>10,829,380</b>
Represented by:					
<b>Unrestricted funds</b>		<b>9,544,308</b>	<b>9,498,776</b>	<b>10,829,380</b>	<b>10,829,380</b>
<b>Restricted funds</b>		-	-	-	-
	16, 17	<b>9,544,308</b>	<b>9,498,776</b>	<b>10,829,380</b>	<b>10,829,380</b>

The net expenditure for the financial year dealt with in the financial statements of the parent charitable company was £1,330,604 (2016: £2,398,567).

The notes on pages 45 to 62 form part of the financial statements.

Approved and authorised for issue on behalf of the Trustees on 10<sup>th</sup> September 2018.



**Eddie O'Gorman OBE**  
Trustee



**Sandra Mileham**  
Trustee

### Consolidated cash flow statement for the year ended 31 December 2017

	Note	2017		2016
		£		£
<b>Cash flows from operating activities:</b>				
Net cash provided by operating activities	a)	(1,259,547)		4,269,002
<b>Cash flows from investing activities:</b>				
Dividends and interest from investments		106,057		142,735
Net cash provided by investing activities		106,057		142,735
<b>Change in cash and cash equivalents in the reporting period</b>		<b>(1,153,490)</b>		<b>4,411,737</b>
<b>Cash and cash equivalents at the beginning of the reporting period</b>	b)	<b>19,462,784</b>		<b>15,051,047</b>
<b>Cash and cash equivalents at the end of the reporting period</b>	b)	<b>18,309,294</b>		<b>19,462,784</b>
<b>Notes to the Cash flow Statement</b>				
<b>a) Reconciliation of net (expenditure) to net cash flow from operating activities</b>		<b>2017</b>		<b>2016</b>
		<b>£</b>		<b>£</b>
Net (expenditure)/income for the reporting period		(1,285,072)		2,398,567
Adjustments for:				
Dividends, interest and rents from investments		(106,057)		(142,735)
Investment Manager Fees		(15,931)		904
Net Change in investments		(101,977)		(186,499)
Decrease/(increase) in debtors		(663,272)		(164,848)
Increase in creditors		912,762		2,363,613
<b>Net cash provided by (used in) operating activities</b>		<b>(1,259,547)</b>		<b>4,269,002</b>
<b>b) Analysis of cash and cash equivalents</b>		<b>1 January</b>	<b>Cashflow</b>	<b>31 December</b>
		<b>2017</b>		<b>2017</b>
		<b>£</b>	<b>£</b>	<b>£</b>
Cash at bank and in hand		402,077	734,920	1,136,997
Cash held as short term investments		10,272,332	(5,934,149)	4,338,183
Cash held as long term investments		8,788,375	4,045,739	12,834,114
		<b>19,462,784</b>	<b>(1,153,490)</b>	<b>18,309,294</b>

## Notes to the financial statements for the year ended 31 December 2017

### 1. Charity information

Children with Cancer UK is a private limited company (registered number 4960054), which is incorporated and domiciled in the UK. The address of the registered office is 51 Great Ormond Street, London WC1N 3JQ. It is also a registered charity (registered number 298405) and as such is a non-profit making organisation, limited by guarantee and therefore with no share capital.

### 2. Accounting policies

#### (a) Basis of preparation

The financial statements have been prepared in accordance with the Charities SORP FRS 102 applicable to charities preparing their accounts in accordance with FRS 102, the Financial Reporting Standard applicable in the UK and Republic of Ireland, the Companies Act 2006 and UK Generally Accepted Practice as it applies from 1<sup>st</sup> January 2015.

The charity meets the definition of a public benefit entity under FRS 102. Assets and liabilities are initially recognised at historical cost or transaction value unless otherwise stated in the relevant accounting policy note(s).

Children with Cancer UK is the ultimate parent company. It has two subsidiaries - Helping Children with Cancer Limited and Children with Cancer Research Limited. Children with Cancer UK owns the whole of the share capital of Helping Children with Cancer Limited, a company registered in England and Wales, number 2807553. It also holds 100% of the share capital of Children with Cancer Research Limited, a company registered in England and Wales, number 09442350 which is currently dormant.

The financial statements of the charity and its active subsidiary company are consolidated, on a line-by-line basis, to produce the Group financial statements. The consolidated entity is referred to as 'the Group'. No separate Statement of Financial Activities has been prepared for the charity as permitted by Section 408 of the Companies Act 2006. The charity has taken advantage of the exemptions in FRS 102 from the requirements to present a charity only Cash Flow Statement and certain disclosures about the charity's financial instruments.

#### (b) Preparation of the accounts on a going concern basis

After making enquires, the Trustees have a reasonable expectation that the charity has adequate resources to continue its activities for the foreseeable future. Accordingly, they continue to adopt the going concern basis in preparing the financial statements as outlined in the Statement of Trustees Responsibilities on page 37. There are no material uncertainties casting doubt on going concern.

(c) Financial Instruments

The charity has financial assets and financial liabilities of a kind that qualify as basic financial instruments. Basic financial instruments are initially recognised at transaction value and subsequently measured at amortised cost. Financial assets held at amortised cost comprise cash at bank and in hand, short term cash deposits together with the group's trade and other debtors excluding prepayments. Financial liabilities held at amortised cost comprise the group's short- and long-term trade and other creditors excluding deferred income and taxation payable. No discounting has been applied to these financial instruments on the basis that the periods over which amounts will be settled are such that any discounting would be immaterial.

Investments, including bonds and cash held as part of the investment portfolio are held at fair value at the Balance Sheet date, with gains and losses being recognised within income and expenditure. Investments in subsidiary undertakings are held at cost less impairment.

(d) Critical accounting judgements and key sources of estimation uncertainty

In the application of the charity's accounting policies, Trustees are required to make judgements, estimates and assumptions about the carrying values of assets and liabilities that are not readily apparent from other sources. The estimates and underlying assumptions are based on historical experience and other factors that are considered to be relevant. Actual results may differ from these estimates.

The estimates and underlying assumptions are reviewed on an on-going basis. Revisions to accounting estimates are recognised in the period in which the estimate is revised if the revision affects only that period, or in the period of the revision and future periods if the revision affects the current and future periods.

The key sources of estimation uncertainty that have a significant effect on the amounts recognised in the financial statements are described in the accounting policies and are summarised below:

Residuary legacies – The charity recognises residuary legacies once probate has been granted which therefore requires an estimation of the amount receivable.

(e) Functional/Presentational currency

The functional currency of the charity and its subsidiary is considered to be in pounds sterling because that is the currency of the primary economic environment in which the charity/group operates. The consolidated financial statements are also presented in pounds sterling.

(f) Fund accounting

Unrestricted funds comprise accumulated surpluses and deficits on general funds and are available for use at the discretion of the Trustees in furtherance of the general objectives of the charity and have not been designated for other purposes.

Restricted funds are funds which are to be used in accordance with specific restrictions imposed by donors or which have been raised by the charity for particular purposes. The costs of raising and administering such funds are charged against the specific fund.

(g) Income

Income is recognised when the charity has entitlement to the funds, any performance conditions attached to the item(s) of income have been met, it is probable that the income will be received and the amount can be measured reliably.

Voluntary income in the form of appeals, committed giving, sports events and community fundraising income is recognised in the period of receipt. Income received in advance of an event or lottery is deferred until the criteria for income recognition are met.

For legacies, entitlement is taken as the earlier of the date on which either: the charity is aware that probate has been granted, the estate has been finalised and notification has been made by the executor(s) to the Trust that a distribution will be made, or when a distribution is received from the estate. Receipt of a legacy, in whole or in part, is only considered probable when the amount can be measured reliably and the charity has been notified of the executor's intention to make a distribution. Where legacies have been notified to the charity, or the charity is aware of the granting of probate, and the criteria for income recognition have not been met, then the legacy is treated as a contingent asset and disclosed if material.

Income arising from corporates and trusts is recognised in the period in which the charity has entitlement to the income.

Income from trading activities is recognised in the period in which the service has been provided or product sold.

Investment income from dividends and interest on funds held on deposit is included when receivable and the amount can be measured reliably by the charity; this is normally upon notification of the interest received or receivable from the Bank.



(h) Expenditure and basis of allocation of costs

Expenditure is recognised once there is a legal or constructive obligation to make a payment to a third party, it is probable that settlement will be required and the amount of the obligation can be measured reliably. All expenditure is accounted for on an accruals basis and the majority is directly attributable to specific activities. Other indirect costs are apportioned to activities in accordance with staff activity and an assessment of where the resources have been applied. Irrecoverable VAT is charged as a cost against the activity for which the expenditure was incurred.

Grants to third parties are included in the SOFA when approved by the Trustees when a constructive obligation exists, notwithstanding that they may be paid in future accounting periods.

Support costs include governance costs which are costs incurred to manage the charity in compliance with constitutional and statutory requirements and the direct expenditure and overhead costs relating to the appeals and fundraising functions. They also include the allocation of costs incurred to support and co-ordinate fundraising activities. These costs are allocated across the categories of charitable activities and the basis of this cost allocation has been explained in note 6 of the financial statements.

Expenditure on raising funds includes expenditure specifically incurred for fundraising purposes. This constitutes a mixture of directly attributable costs and apportionment.

(i) Taxation

Children with Cancer UK, as a registered charity, is exempt from taxation of income falling within Section 505 of the Taxes Act 1988 or section 256 of the Taxation of Chargeable Gains Act 1992 to the extent that this is applied to its charitable objectives. No tax charge has arisen in the year.

(j) Tangible fixed assets

Tangible fixed assets costing more than £10,000 are capitalised and included at cost including any incidental costs of acquisition, or, where donated, are included at valuation at the date that ownership is acquired.

(k) Pension scheme

Permanent employees are entitled to join the Grouped Stakeholder Pension Plan provided by Scottish Widows. In 2017, the charity made a contribution of 8% (2016: 8%) of salary per month to any personal or stakeholder pension scheme selected by all employees serving for more than three months who elected to take advantage of this benefit. The amount charged to the statement of financial activities in respect of pension costs is the contribution payable during the year.

(l) Investments

Permanent employees are entitled to join the Grouped Stakeholder Pension Plan provided by Scottish Widows. In 2017, the charity made a contribution of 8% (2016: 8%) of salary per month to any personal or stakeholder pension scheme selected by all employees serving for more than three months who elected to take advantage of this benefit. The amount charged to the statement of financial activities in respect of pension costs is the contribution payable during the year.

(m) Gifts in Kind

Gifts in kind and donated goods and services are recognised in the accounts when the benefit to the charity is reasonably quantifiable and measurable. The value is the price the charity estimates it would pay should it purchase equivalent goods or services.

The estimated valuation of gifts in kind is based on the value of the contribution to the charity, or the valuation the charity would have had to pay to acquire the goods or services. A corresponding amount is recognised within expenditure in the period of receipt.

(n) Private Medical Insurance

Since October 2017, permanent employees are entitled to join the Group Private Medical Insurance Scheme provided by Bupa. In 2017, the charity paid a premium based on the employee's ages per month to all employees after serving for more than three months who elected to take advantage of this benefit. The amount charged to the statement of financial activities in respect of private medical insurance is the contribution payable during the year.

### 3. Consolidated statement of financial activities for the year ended 31 December 2016

	Total restricted funds £	Total unrestricted funds £	Total 2016 £
<b>Income from:</b>			
Donations and legacies	303,238	15,279,183	15,582,421
Other trading activities	-	750,973	750,973
Income from investments	-	142,735	142,735
Other income	-	48,287	48,287
<b>Total Income</b>	<b>303,238</b>	<b>16,221,178</b>	<b>16,524,416</b>
<b>Expenditure on:</b>			
Raising funds	-	2,520,561	2,520,561
Charitable activities	1,842	11,789,945	11,791,787
<b>Total Expenditure</b>	<b>1,842</b>	<b>14,310,506</b>	<b>14,312,348</b>
Net change in investments	-	186,499	186,499
<b>Net (expenditure)/income</b>	<b>301,396</b>	<b>2,097,171</b>	<b>2,398,567</b>
<b>Transfers between funds</b>	<b>(301,396)</b>	<b>301,396</b>	<b>-</b>
<b>Net movement in funds</b>	<b>-</b>	<b>2,398,567</b>	<b>2,398,567</b>
Reconciliation of funds:			
<b>Total funds brought forward</b>	<b>-</b>	<b>8,430,813</b>	<b>8,430,813</b>
<b>Total funds carried forward</b>	<b>-</b>	<b>10,829,380</b>	<b>10,829,380</b>

### 4. Income

	2017 £	2016 £
<b>Donations and legacies</b>		
Appeals and associated donations	3,717,331	4,074,561
Committed giving	1,563,697	1,499,086
Community fundraising	831,523	779,890
Corporate and trust donations	1,033,349	1,500,989
Legacies (see contingent asset below)	1,259,919	1,887,778
Sports events	4,410,962	4,367,323
	<b>12,816,781</b>	<b>14,109,627</b>
Scratch cards (see scratch card income below)	533,912	1,472,794
	<b>13,350,693</b>	<b>15,582,421</b>
<b>Other trading activities</b>		
Events	867,056	736,111
Sale of merchandise	118	14,862
	<b>867,174</b>	<b>750,973</b>

## Contingent asset – legacy income

As at 31 December 2017, the charity had been notified of a further 19 residuary legacies which have not been recognised as income in the Statement of Financial Activities as they do not meet the criteria as detailed in the accounting policies. These legacies have an estimated value of £1,012,191 which has not been accrued.

## Scratch card income

The scratch card income relates to the sale of gambling products as part of a corporate partnership with the Gala Coral Group Ltd. As part of the agreement, the charity receives 20% of the sales proceeds of the scratch card. However, as the product was launched under the charity's Gambling Commission license, the charity has recognised 100% of the sales proceeds as income and 80% as expenditure.

## 5. Lottery income

As part of the charity's Gambling Commission License (Non Remote License - 000-004700-N-306402-010) (Remote License – 000-004700-R-308531-010), during the year the charity has operated three lotteries, a weekly lottery and charity scratch card.

The following ticket sales were received for each lottery where the draw was held in 2017:

	<b>Ticket sales £</b>
Weekly Lottery	478,682
Christmas Raffle (draw 3 <sup>rd</sup> February 2017)	672,391
Spring Raffle (draw 12 <sup>th</sup> May 2017)	290,502
Summer Raffle (draw 12 <sup>th</sup> September 2017)	371,014
<b>Total</b>	<b>1,812,589</b>

As the Christmas raffle spans two accounting periods, £133,559 was received during 2017 and £538,832 during 2016. All other ticket sales were received during 2017 only. All ticket sales have been included within the total income for 2017 and 2016.

As explained in Note 4, the charity operates a scratch card with Gala Coral Group Ltd acting as the external lottery manager. Six scratch cards were launched on 21st October 2014 with an expiry date of 31st March 2016 and a further two were made available on 3rd July and 14th August 2015 expiring on 31st December 2016. Two more scratch cards were made available during 2016 expiring on 30<sup>th</sup> June 2017. The total sales of these scratch cards amounted to £6,280,404.

These sales have been included within the total income for 2017, 2016, 2015 and 2014 as follows:

	<b>2017 £</b>	<b>2016 £</b>	<b>2015 £</b>	<b>2014 £</b>	<b>Total £</b>
Gross Sales	849,571	597,419	4,215,340	618,074	6,280,404
Prizes and Management Fee	679,657	477,935	3,372,272	494,459	5,024,323
Net Sales	169,914	119,484	843,068	123,615	1,256,081

In line with the new requirements under Social responsibility code provision 4.3.1 of the License Conditions and Codes of Practice of the Gambling Act 2005 the following section details the percentage of lottery proceeds returned to the purposes of the society (Children with Cancer UK) from the lotteries promoted in 2017.

Lottery type	Lottery Name	Percentage proceeds returned to Charity %
Managed directly by Children With Cancer UK	Linda's Lottery – Weekly Draw	56%
Managed directly by Children With Cancer UK	Children with Cancer Grand Draw	68%
Managed by Coral	Scratch cards	20%
<b>Total</b>		<b>50%</b>

## 6. Total expenditure

	Expenditure on raising funds £	Expenditure on charitable activities £	Support and governance costs £	2017 Total £	2016 Total £
Staff costs	320,414	626,735	574,480	<b>1,521,629</b>	<b>1,540,074</b>
Charitable expenditure	-	11,935,498	-	<b>11,935,498</b>	<b>10,557,536</b>
Mailing / Campaign costs	861,363	-	-	<b>861,363</b>	<b>914,336</b>
Event costs	956,697	-	-	<b>956,697</b>	<b>962,447</b>
Other expenditure	211,161	-	200,848	<b>412,009</b>	<b>303,755</b>
Audit fee	-	-	32,200	<b>32,200</b>	<b>34,200</b>
	<b>2,349,634</b>	<b>12,562,233</b>	<b>807,528</b>	<b>15,719,396</b>	<b>14,312,348</b>
	=====	=====	=====	=====	=====

## 7. Support costs

Support costs are split as follows:

	Support costs £	Governance costs £	2017 Total £	2016 Total £
Staff costs	495,617	82,388	578,005	553,707
Other expenditure	197,323	-	197,323	169,813
Audit fee	-	32,200	32,200	34,200
	<b>692,940</b>	<b>114,588</b>	<b>807,528</b>	<b>757,720</b>
	=====	=====	=====	=====

Central office overheads are allocated on a per person basis to staff in the office. The time spent by each staff member on every activity of the charity is allocated on a month by month basis throughout the year. Overheads and staff costs are then allocated to the various charitable activities below based on this staff time basis.

## 8. Costs of charitable activities

	Activities undertaken directly £	Grant funding of activities £	Support and governance costs £	2017 Total £	2016 Total £
Research into Prevention & Causes	1,454,343	268,340	100,560	<b>1,823,243</b>	<b>2,351,275</b>
Research into Treatment	439,860	5,547,033	100,578	<b>6,087,471</b>	<b>4,487,627</b>
Welfare	1,407,064	1,392,000	135,491	<b>2,934,555</b>	<b>1,976,089</b>
Education	2,043,593	10,000	213,683	<b>2,267,276</b>	<b>2,976,796</b>
	5,344,860	7,217,373	550,312	<b>13,112,545</b>	<b>11,791,787</b>
	=====	=====	=====	=====	=====

## 9. Results of the parent charity

	2017 £	2016 £
Total income	14,406,627	16,721,040
Total expenditure	(15,737,231)	(14,322,472)
Net (Expenditure) / Income	<b>(1,330,604)</b>	<b>2,398,568</b>
	=====	=====

## 10. Investments

	2017 £	2016 £
Listed investments (see below)	1,746,983	1,629,077
Cash deposits	12,834,114	8,788,375
	=====	=====
	<b>14,581,097</b>	<b>10,417,452</b>
	=====	=====
<b>Market value of listed investments at 1 Jan</b>	<b>1,629,077</b>	<b>1,443,482</b>
Additions to investment portfolio	253,079	460,679
Disposals to investment portfolio	(259,455)	(460,795)
Investment manager fees	(14,900)	(13,784)
Net Investment gain/( loss)	139,182	199,495
	=====	=====
<b>Market value of listed investments at 31 Dec</b>	<b>1,746,983</b>	<b>1,629,077</b>
	=====	=====
<b>Listed Investments comprise the following:</b>		
Cash and short maturity bonds	35,767	41,093
Developed Government bonds	16,189	16,080
High Yield and Emerging Market Bonds	77,065	79,371
Investment Grade Bonds	63,118	60,206
Developed Market Equities	1,173,495	1,095,802
Emerging market equities	147,691	127,843
Real estate	175,876	157,346
Multi class and other investments	57,782	51,336
	=====	=====
<b>Total listed investments at 31 Dec</b>	<b>1,746,983</b>	<b>1,629,077</b>
	=====	=====

<b>Total Investments are listed in:</b>		
United Kingdom	1,178,723	1,580,399
Overseas	568,260	48,678
	<b>1,746,983</b>	<b>1,629,077</b>
	=====	=====

### Investment in subsidiary

Children with Cancer UK holds 100% of the share capital of Helping Children with Cancer Limited. The value of the share capital owned is £100. Helping Children with Cancer Limited raises funds via commercial activities and sponsorship.

The income and expenditure for the year ended 31 December 2017 is as follows:

	<b>2017 £</b>	<b>2016 £</b>
Income	57,603	83,028
Cost of sales	-	-
Administrative expenses	(12,071)	(12,645)
<b>Profit before gift aid and taxation</b>	<b>45,532</b>	<b>70,383</b>
	=====	=====

The balance sheet for the subsidiary as at 31 December 2017 is as follows:

	<b>2017 £</b>	<b>2016 £</b>
Assets	182,535	102,195
Liabilities	(136,903)	(102,095)
<b>Reserves</b>	<b>45,632</b>	<b>100</b>
	=====	=====

The charity also holds 100% of the share capital of Children with Cancer Research Limited (09442350) which is currently dormant.

### 11. Trustees' emoluments

The Trustees received no remuneration or reimbursement of expenses during the year (2016 Nil).

## 12. Debtors

	2017 Group £	2017 Charity £	2016 Group £	2016 Charity £
Trade debtors	103,876	103,790	48,135	44,298
Amounts due from subsidiary undertakings	-	133,203	-	97,775
Other debtors	253,125	253,125	426,334	426,334
Accrued income	197,510	163,665	458,162	400,290
Prepayments	2,460,260	2,460,260	1,418,868	1,418,868
	<u>3,014,771</u>	<u>3,114,043</u>	<u>2,351,499</u>	<u>2,387,565</u>
	=====	=====	=====	=====

## 13. Grants to third parties

	2017 £	2016 £
<b>Outstanding liabilities at the start of the year</b>	<b>11,935,012</b>	<b>9,436,896</b>
Awarded during the year (note 21):		
Research into prevention and causes	268,340	1,030,847
Research into treatment	5,553,033	3,106,870
Welfare	1,392,000	1,034,596
Raising awareness	10,000	194,180
	<u>7,223,373</u>	<u>5,366,493</u>
Under-spends on previous grant awards	(192,108)	(600,735)
Paid during the year	(6,155,045)	(2,267,642)
Foreign exchange loss	-	-
<b>Outstanding liabilities at the end of the year</b>	<b>12,811,232</b>	<b>11,935,012</b>
	=====	=====
Grants falling due within one year	6,869,160	6,303,885
Grants falling due after more than one year	5,942,072	5,631,127
	<u>12,811,232</u>	<u>11,935,012</u>
	=====	=====

## 14. Creditors: amounts falling due within one year

	2017 Group £	2017 Charity £	2016 Group £	2016 Charity £
Accruals and deferred income	679,434	675,735	635,972	631,652
Taxes and social security	36,074	36,074	42,996	42,996
Amounts due to subsidiary undertakings	-	13,908	-	4,561
	<u>715,508</u>	<u>725,717</u>	<u>678,968</u>	<u>679,209</u>
Grants payable	6,869,160	6,869,160	6,303,885	6,303,885
	<u>7,584,668</u>	<u>7,594,877</u>	<u>6,982,853</u>	<u>6,983,094</u>
	=====	=====	=====	=====



## 15. Deferred income

Deferred income comprises income received in advance for entries to our weekly lottery.

	2017 Group £	2017 Charity £	2016 Group £	2016 Charity £
<b>Balance as at 1 January 2017</b>	<b>52,383</b>	<b>52,383</b>	<b>30,968</b>	<b>30,968</b>
Amount released to income from donations	(52,383)	(52,383)	(30,968)	(30,968)
Amount deferred in year	55,105	55,105	52,383	52,383
<b>Balance as at 31 December 2017</b>	<b>55,105</b>	<b>55,105</b>	<b>52,383</b>	<b>52,383</b>
	=====	=====	=====	=====

## 16. Analysis of net assets between funds

As at 31 December 2017	2017 Group Restricted funds £	2017 Group Unrestricted funds £	2017 Group Total funds £	2016 Group Total funds £
Fixed assets	-	14,581,097	14,581,097	10,417,552
Net current assets	-	905,283	905,283	6,042,955
Creditors falling due after more than one year	-	(5,942,072)	(5,942,072)	(5,631,127)
<b>Net assets at the end of the year</b>	<b>-</b>	<b>9,544,308</b>	<b>9,544,308</b>	<b>10,829,380</b>
	=====	=====	=====	=====

As at 31 December 2016	2016 Group Restricted funds £	2016 Group Unrestricted funds £	2016 Group Total funds £	2015 Group Total funds £
Fixed assets	-	10,417,452	10,417,452	11,855,726
Net current assets	-	6,043,055	6,043,055	2,354,134
Creditors falling due after more than one year	-	(5,631,127)	(5,631,127)	(5,779,047)
<b>Net assets at the end of the year</b>	<b>-</b>	<b>10,829,380</b>	<b>10,829,380</b>	<b>8,430,813</b>
	=====	=====	=====	=====

## 17. Statement of funds

Year ended 31 December 2017	At the start of the year £	Total Income £	Total Expenditure £	Transfers & Investments gains/losses £	At the end of the year £
<b>Restricted funds</b>					
Professor Louis Chesler. Institute of Cancer Research, Individualising Management of Paediatric Cancer Treatment - IMPACT	-	202,445	(202,445)		-
Professor Richard Grundy. BIOMarkers of Ependymomas in Children and Adolescents (BIOMECA) - Integrated Biological study within SIOP Ependymoma II trial organised by European Ependymoma Biology Consortium	-	149,998		(149,998)	-
Professor Tariq Enver. Dissecting the causative and collaborating roles of candidate genetic mutations in the pathogenesis of childhood ALL	-	49,778		(49,778)	
Professor Andrew Peet, Institute of Child Health, University of Birmingham. Non invasive identification of medulloblastoma genetic subtypes using metabolite profiles and imaging features	-	6,000		(6,000)	-
Professor Christine Harrison. Newcastle University, Sequencing the unsequenceable: development of ground-breaking technologies to investigate the role of complex genomic sequences in childhood cancer	-	4,098		(4,098)	-
Professor Robert Mairs. University of Glasgow, Two radiopharmaceuticals for treatment of neuroblastoma	-	425	(425)		-
Dr Lynne Hampson. University of Manchester, Identification of infections which may play a role in the aetiology of childhood acute lymphoblastic leukaemia (ALL)	-	245		(245)	-
Dr Helen Bryant. University of Sheffield, Novel therapies for MYCN-amplified neuroblastoma	-	85		(85)	-
CLIC Sargent, to their Grants Fund, which provides much needed financial assistance to the families of children being treated for cancer	-	676	(676)		-
<b>Total Restricted funds</b>	-	<b>413,750</b>	<b>(203,546)</b>	<b>(210,204)</b>	-
Unrestricted funds	10,829,380	13,918,597	(15,515,850)	210,204	9,442,331
Investment Gains / Losses	-	-	-	101,977	101,977
<b>Total Unrestricted funds</b>	<b>10,829,380</b>	<b>13,918,597</b>	<b>(15,515,850)</b>	<b>312,181</b>	<b>9,544,308</b>
<b>Total funds</b>	<b>10,829,380</b>	<b>14,332,347</b>	<b>(15,719,396)</b>	<b>101,977</b>	<b>9,544,308</b>
	=====	=====	=====	=====	=====

### Note

The restricted funds comprise donations that were to be spent on specific causes and projects.

All other restricted income was either discharged during the year or transferred from restricted back to unrestricted funds. This has occurred when restricted funds were received towards grants that were previously paid out of unrestricted reserves.

<b>Year ended 31 December 2016</b>	<b>At the start of the year £</b>	<b>Total Income £</b>	<b>Total Expenditure £</b>	<b>Transfers &amp; Investment gains/losses £</b>	<b>At the end of the year £</b>
<b>Restricted funds</b>					
Professor Richard Grundy. BIOMarkers of Ependymomas in Children and Adolescents (BIOMECA) - Integrated Biological study within SIOP Ependymoma II trial organised by European Ependymoma Biology Consortium	-	245,498	-	(245,498)	-
Professor John Anderson, UCL Great Ormond Street Institute of Child Health, TCR-transduced T cells for immunotherapy of paediatric high grade glioma	-	1,520	(1,520)	-	-
Helen E Bryant, University of Sheffield, Novel therapies for MYCN-amplified neuroblastoma	-	122	(122)	-	
Professor Andrew Peet, Institute of Child Health, University of Birmingham. Non-invasive identification of medulloblastoma genetic subtypes using metabolite profiles and imaging features	-	8,800	-	(8,800)	-
Dr Juan Pedro Martinez Barbera, UCL Great Ormond Street Institute of Child Health, Molecular Characterisation and Assessment of Potential Biomarkers and Novel Drug Targets for Childhood Craniopharyngioma	-	5,000	-	(5,000)	-
Dr Steven Pollard, University of Edinburgh. Genome editing of human neural stem cells using nuclease-assisted gene targeting: a tool to uncover the function of H3F3A mutations in paediatric glioma	-	3,000	-	(3,000)	-
Professor Persis Amrolia, Great Ormond Street Hospital. Immunotherapy with CD19 CAR redirected T cells for relapsed paediatric ALL (CARPALL)	-	50	-	(50)	-
Anglers Against Cancer, contribution towards welfare	-	200	(200)	-	-
Professor Shai Izraeli, Sheba Medical Centre. Hematopoietic transcription factors and childhood leukaemia - Down syndrome as a model	-	28	-	(28)	-
Professor David Grimwade, King's College London. Molecular tracking of treatment response in paediatric AML	-	39,020	-	(39,020)	-
<b>Total Restricted funds</b>	<b>-</b>	<b>303,238</b>	<b>(1,842)</b>	<b>(301,396)</b>	<b>-</b>
Unrestricted funds	8,430,813	16,221,178	(14,310,506)	301,396	10,642,881
Investment Gains / Losses	-	-	-	186,499	186,499
<b>Total Unrestricted funds</b>	<b>8,430,813</b>	<b>16,221,178</b>	<b>(14,310,506)</b>	<b>487,895</b>	<b>10,829,380</b>
<b>Total funds</b>	<b>8,430,813</b>	<b>16,524,416</b>	<b>(14,312,348)</b>	<b>186,499</b>	<b>10,829,380</b>
	=====	=====	=====	=====	=====

## 18. Staff costs

	2017 £	2016 £
Salaries and wages	1,279,919	1,300,099
National Insurance	135,947	137,278
Pension	103,579	102,697
Private Medical Insurance	2,184	-
	<b>1,521,629</b>	<b>1,540,074</b>
	=====	=====

During 2017, one employee was paid a gross salary between £90,000 and £100,000 (2016: none). No employee has been paid a gross salary between £60,000 and £70,000 (2016: one).

There have been 8 (2016: 6) positions that have formed part of the senior leadership team. The total remuneration including pension contributions for these employees amounts to £467,910 (2016: £452,548).

In addition to the management section on page 34, an employee that is connected to a Trustee was paid £90,317 gross salary and £12,641 pension contributions (2016: £89,008 gross salary and £7,667 pension contributions). There is no interdependence between the Trustee and the connected person.

During the year there were no redundancy, termination or settlement payments made (2016 £28,708)

The average weekly number of contracted employees during the year was as follows:

	2017	2016
	No.	No.
Charitable Activities	3	4
Raising Funds	26	23
Support, Governance, Operations and Administration	8	9
	<b>37</b>	<b>36</b>
	=====	=====

## 19. Related Party Transactions

There have been no other related party transactions during the year other than those with the trading subsidiary.

A management fee of £5,000 (2016: £5,000) has been charged to the trading subsidiary for use of the charity's trademarks and a further £3,371 (2016: £3,985) for the use of charity staff (calculated on the basis of time charged to subsidiary activity by the employee). As at 31st December 2017, £13,908 (2016: £4,561) was owed to the trading subsidiary from the charity and, conversely, £133,203 (2016: £97,775) owed to the charity from the trading subsidiary.

## 20. Financial Instruments

The financial statements include the following in respect of items:

	2017 £	2016 £
Financial assets measured at amortised cost	18,638,831	20,311,599
Financial liabilities measured at amortised cost	(12,675,893)	(12,519,318)
Financial assets measured at fair value	1,746,983	1,629,077

	2017 £	2016 £
The entity's income, expense, gains and losses in respect of financial instruments are summarised below:		
Total interest income for financial assets held at fair value	106,057	142,735

## 21. Grants to third parties

	Research into prevention and causes 2017 £	Research into treatment 2017 £	Welfare 2017 £	Education 2017 £	Total 2017 £
Cancer Research UK- Individualising Management of Paediatric Cancer Treatment- IMPACT		2,240,000			2,240,000
Professor Louis Chesler, Institute for Cancer Research- Individualising Management of Paediatric Cancer Treatment – IMPACT		1,500,000			1,500,000
CLIC Sargent – Home from Home in Southampton, providing patient and family accommodation close to Southampton General Hospital.			690,000		690,000
CLIC Sargent, to their Grants Fund, which provides much needed financial assistance to the families of children being treated for cancer			332,000		332,000
Bristol Children's Hospital- 'Keeping Families Together' – Providing Family Accommodation at Bristol Children's Hospital			250,000		250,000
Professor Michael Hawkins, University of Birmingham- Risk stratification of the national population of survivors of childhood, teenage and young adult cancer for evidence-based clinical follow-up		249,842			249,842
Dr Audrey Bonaventure, London School of Hygiene and Tropical Medicine- Global surveillance of survival from haematological malignancies in children, teenagers and young adults		249,178			249,178
Dr John Moppett, Bristol Royal Hospital for Children- A pilot study to test the feasibility of delivering an integrated risk stratification algorithm for multi-centre trials in childhood leukaemia	248,400				248,400
Dr Owen Williams, UCL Great Ormond Street Institute for Child Health- Harnessing SMAD7 induced transcriptional pathways for novel anti-leukaemia therapies		245,852			245,852
Dr Oleg Gerasimenko, Cardiff University- Modification of the Asparaginase-based drugs for ALL		245,507			245,507
Professor Sibylle Mitnacht, UCL Cancer Institute- Exploring retinoblastoma protein loss as an actionable target in paediatric bone and soft tissue sarcoma		239,242			239,242
Professor Olaf Heidenreich, Newcastle University- Non-genotoxic combination treatments for paediatric acute leukaemias		237,514			237,514
Dr Rachael Nimmo, UCL Cancer Institute- Targeting RUNX/Core Binding Factor-dependency in relapsed and poor prognosis acute lymphoblastic leukaemia		182,907			182,907
Professor Robert Mairs, University of Glasgow- Two radiopharmaceuticals for treatment of neuroblastoma		145,513			145,513
Lifelites- To help enhance the lives of children with cancer in hospices through the use of specialist technology			120,000		120,000
Dr John Bithell, University of Oxford- Preservation and analysis of pathology records and family histories of children with cancer	19,940				19,940
Dr Christina Halsey (Extension of existing grant), University of Glasgow- Biomarkers and discovery of new therapeutic targets for chemotherapy associated neurotoxicity.		11,478			11,478
Claire Hislop- Neuroblastoma Parent Education Conference (2017)				10,000	10,000
Suzanne Turner- 8th Annual Meeting of the European Research Initiative for ALK-Related Malignancies (ERIA)		6,000			6,000
<b>Total grants to third parties</b>	<b>268,340</b>	<b>5,553,033</b>	<b>1,392,000</b>	<b>10,000</b>	<b>7,223,373</b>



**Every day more than 12 children and young people are diagnosed with cancer in the UK.**



**8 out of 10 young childhood cancer patients can be successfully treated thanks to vital, specialist research we helped fund.**



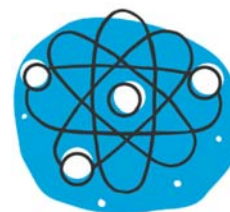
**We need to develop safer, kinder and more effective cancer therapies for children, with fewer toxic side effects. We strive to ensure that we are doing everything we can to improve the lives of children with cancer.**



**We fund Research**



**We fund Welfare**



**We raise Awareness**

Children with Cancer UK  
Registered Office  
51 Great Ormond Street  
London  
WC1N 3JQ